

## Table of Contents

Get Ready

Installation

Cable Through the Wall Ceiling

Cable Through the Side Outlet

Install micro SD card (Optional)

Connect Alarm/audio Device (Optional)

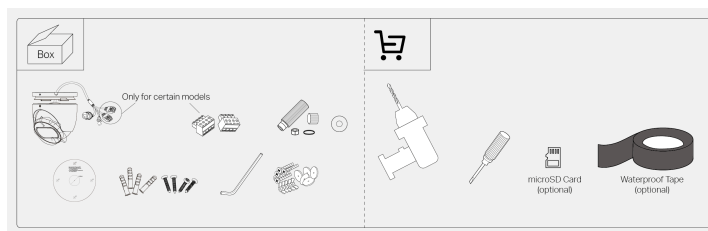
Waterproof Cables (Optional)

Configuration

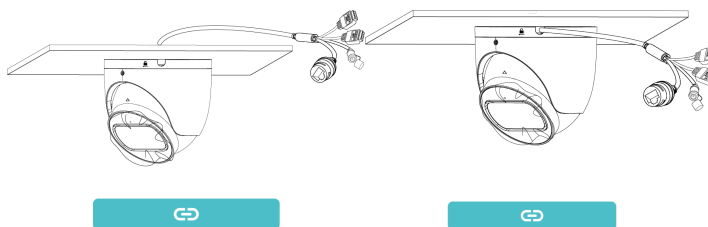
# VIGI InSight Series Turret Network Camera\_Installation Guide

## Get Ready

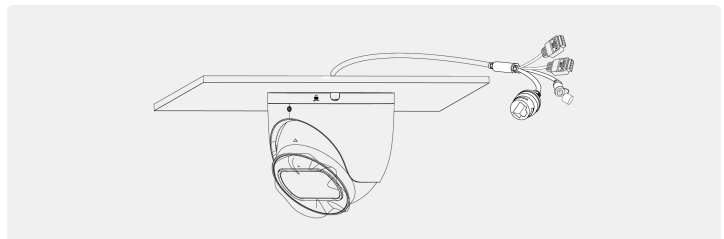
For optimal performance, visit <https://www.tp-link.com/support/faq/4841/> to get installation precautions and instructions.



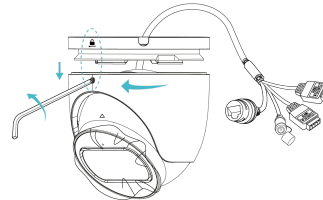
## Installation



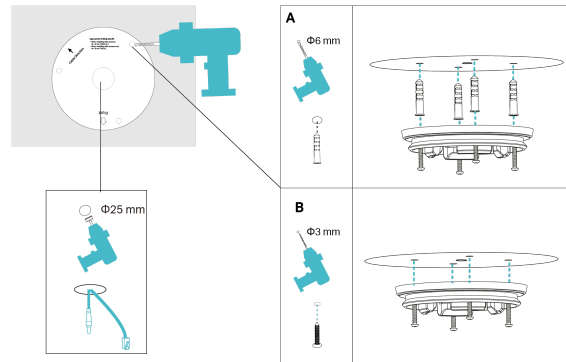
### Cable Through the Wall Ceiling



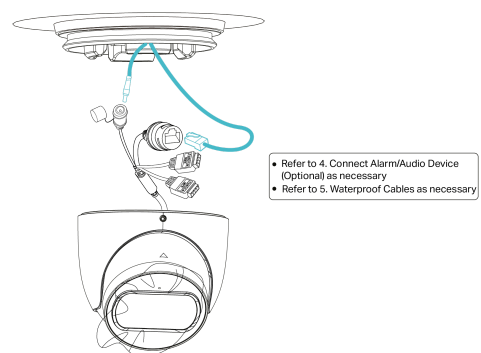
1



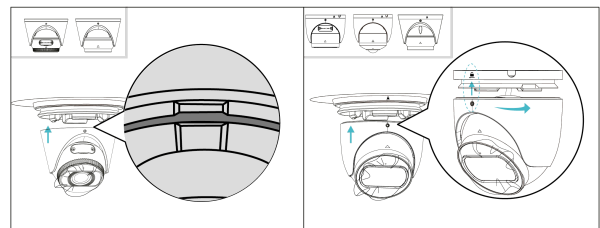
2



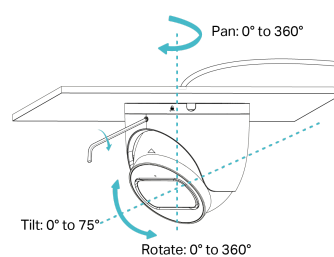
3



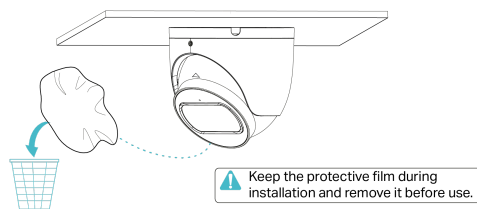
4



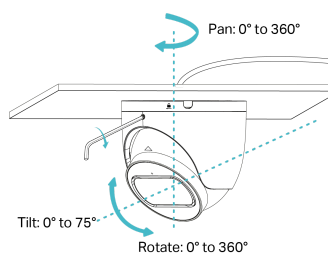
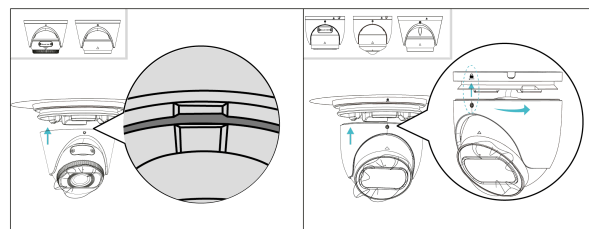
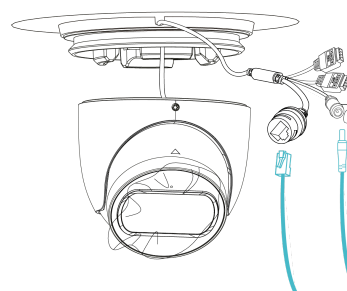
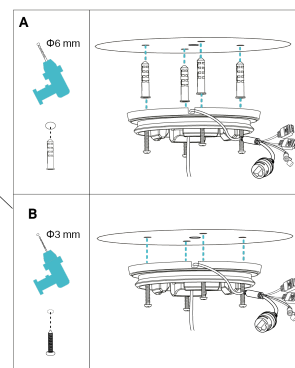
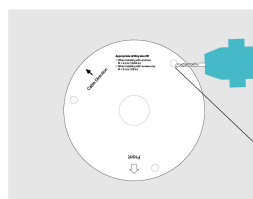
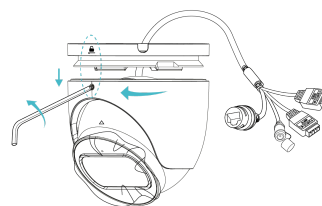
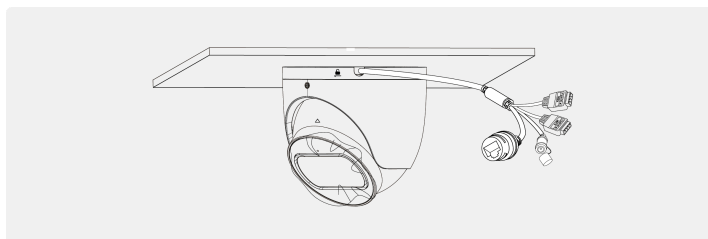
5



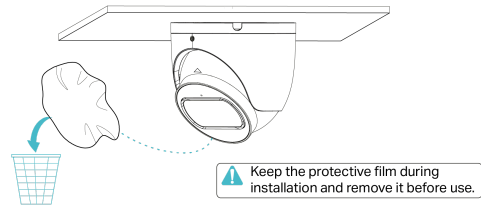
6



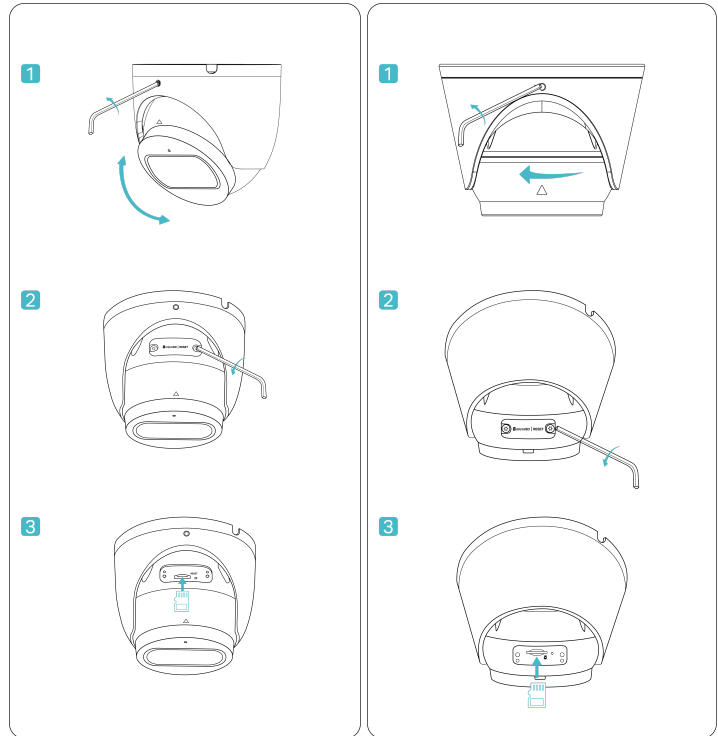
## Cable Through the Side Outlet



6

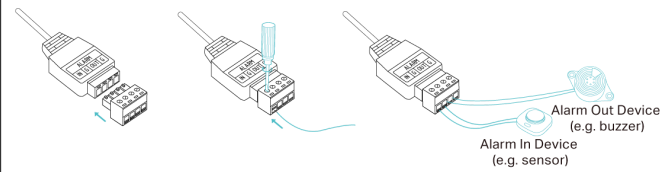
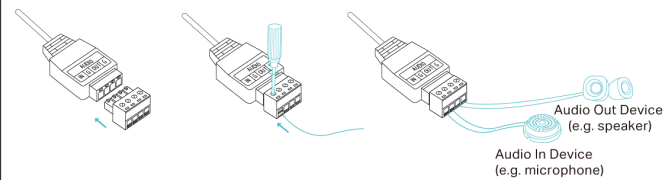


## Install micro SD card (Optional)

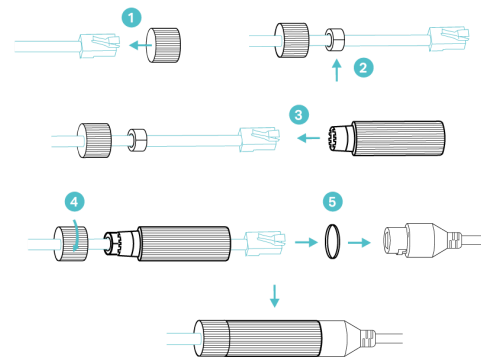
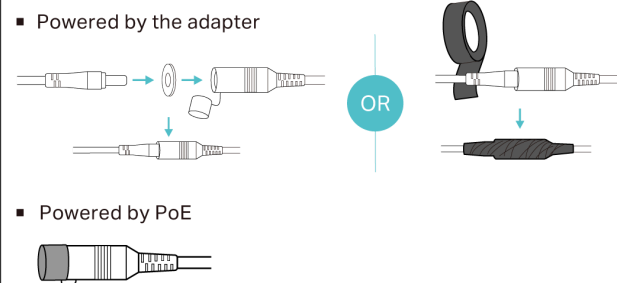
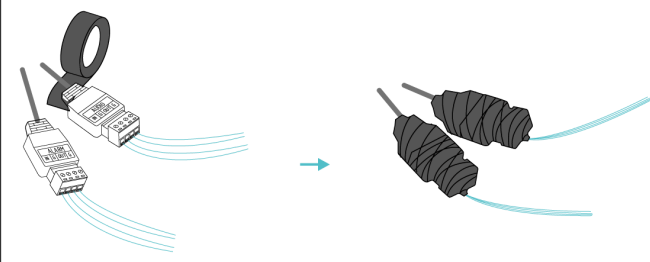


## Connect Alarm/Audio Device (Optional)

Refer to <https://www.tp-link.com/support/faq/4041> for more details.

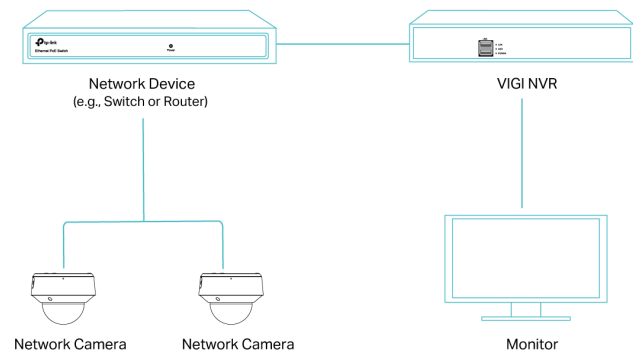
**Connect Alarm Device****Connect Audio Device**

## Waterproof Cables (Optional)

**For Ethernet Cable****For Power Cord****For Alarm/Audio Interface**

## Configuration

Here is a typical network topology. You can add and manage your devices via any of the methods.



### ■ Via NVR

The camera works with an NVR for easier batch access and management. Here we use a VIGI NVR as an example.

1. Connect your cameras to the same network as your NVR.
2. Power on your cameras with the PoE power supply or an external power supply.
3. Right click on the Live View screen on the monitor, and click Add Camera.
4. Select your camera and click + to add your camera directly. If you have disabled Plug and Play on your NVR, create a password or use a preset password for your camera.

### Note:

If you are using your cameras with other NVR brands, follow the steps below.

1. Power on your cameras and connect them to the network.
2. Activate the cameras using the TP-Link VIGI app or web management page.
3. Refer to the NVR's User Manual to add cameras.

### ■ Via VIGI App

You can remotely view live video, manage device, and get instant alerts via VIGI app.



TP-Link VIGI App

### ■ Via Web

You can view live video and modify camera settings via a web browser.

1. Find the camera's IP address on your router's client page.
2. On your local computer, open a web browser and enter https://camera's IP address (https://192.168.0.60 by default).
3. Select your Country/Region and Time Zone.
4. Set a password to activate the camera.

## Sign Up for News & Offers

## Follow Us

### About

About Us  
Corporate Information  
Our Security Commitment  
Sustainability  
Privacy Policy  
Ethical Violation Complaint  
Accessibility  
Contact Us

### Press

News  
Blog  
Awards  
Security Advisory

### Learning Center

Technology Library



TP-Link, Tapo, Kasa, Omada, VIGI, Aginet, HomeShield, and Tapo Care branded products are products of TP-Link Systems Inc. or its affiliates.

Note: Some services and materials may require you to accept additional terms and conditions before access or use.

References to "TP-Link" may include TP-Link Systems Inc., its subsidiaries, or business units within the TP-Link corporate structure, as applicable.

The materials provided, including but not limited to press releases, presentations, blog posts, and webcasts, are current as of the date of publication and may be superseded by subsequent updates.