

Table of Contents

About This Guide

Introduction

Set Up Your Camera

Set Up Using Amazon Frustration-Free Setup

Mounting Tips

Mount Your Solar Panel & Camera

Support

Authentication

Installation and User Guide

About This Guide

This guide provides a brief introduction to the Solar-Powered Pan/Tilt Security Camera Kit and the Tapo app, as well as regulatory information. Please note that features available in Tapo may vary by model and software version. Tapo availability may also vary by region. All images, steps, and descriptions in this guide are only examples and may not reflect your actual Tapo Camera experience.

Conventions

In this guide, the following convention is used:

Convention	Description
Blue	Key information appears in blue, including management page text such as menus, items, buttons and so on.
Underline	Hyperlinks are in blue and underlined. You can click to redirect to a website.
Note	Ignoring this type of note might result in a malfunction or damage to the device.

More Info

Specifications can be found on the product page at <https://www.tapo.com>.
Our Technical Support and troubleshooting information can be found at <https://www.tapo.com/support/>.
The setup video can be found at <https://www.tp-link.com/support/setup-video/#cloud-cameras>.

Introduction

The Solar-Powered Pan/Tilt Security Camera offers 360° comprehensive protection with a 360° horizontal and 130° vertical viewing range, ensuring complete coverage and eliminating blind spots. You can set custom patrol points for dynamic, automated monitoring, all controlled through a single app that provides total control over premium features. With smart person detection, you receive instant alerts when a person is detected, significantly reducing false alerts and unnecessary notifications. Additionally, customizable activity zones allow you to monitor specific areas while blocking out zones that you wish to keep hidden.

- Wire-Free Design – Enjoy unparalleled security with the flexibility to monitor any space—no outlets required.
- Smart Person Detection – Receive notifications only when a person is detected, reducing false alerts and prolonging battery life.
- 2K 3MP Live View – Captures more details and delivers high-definition pictures with a 2304×1296 px resolution.
- IP65 Weatherproof – Performs well even in harsh environments with rain and dust, ideal for outdoor scenarios.
- Color Night Vision – Enhances your nighttime security by revealing vivid colors with the built-in dual spotlights.
- High-Efficiency Solar Charging – Just 45 minutes\$ of direct sunlight charges Tapo C610/TC90 for all-day use. No sun? No problem. The built-in battery provides power for up to 200 days.*

*200-day battery life is based on Tapo laboratory tests with 300s of use per day. The time

of use includes recording and watching live views. Actual battery life may vary due to device settings, usage, router specifications, and environmental factors.

- Customizable Sound and Light Alarm – Record custom audio for alarms and adjust the brightness of the spotlights to suit your needs.
- Local* and Cloud** Storage – Save all your important moments to a microSD card* (Up to 512 GB) or subscribe to Tapo Care** for cloud serviceafter a free trial.
*microSD card must be purchased separately.
**Subscribe for cloud storage at <https://www.tapo.com/tapocare/>
- Two-Way Audio – Enables communication through a built-in microphone and speaker.

Appearance

1 IR LED

2 White Light LED

3 Status LED: It shows your camera status.

4 Lens: For capturing things within its view.

5 Motion Sensor

6 Microphone: For capturing your voice.

7 Reset Button: Open the cover to find the Reset Button. While the camera is powered on, press and hold the RESET button to reset the camera.

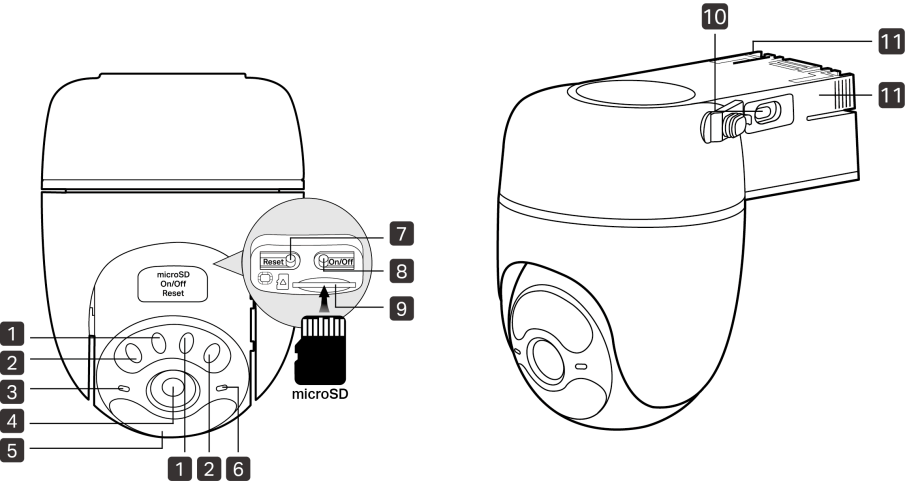
- Press and hold for 5 seconds: Reset Wi-Fi while preserving the other.
- Press and hold for 10 seconds: Reset to factory settings.

8 On/Off Power Button: Open the cover. Press and hold the On/Off Button for 3 seconds to turn the camera on or off.

9 microSD card slot: Open the cover to find the microSD card slot. Insert a microSD card (not included) and initialize it on the Tapo app for local recording.

10 USB Type-C Charging Port

11 Release Latch: Press two release latches to detach the camera from the bracket.



Status LED Indication

LED Status	Indication
Blinking amber quickly for 3 seconds	Plugging in USB charger
Solid red	Starting up

LED Status	Indication
Blinking red and green	Ready for setup
Blinking red slowly	Connecting to Wi-Fi
Solid amber	Connected to Wi-Fi
Solid green	Connected to the cloud
Blinking red quickly	Camera resetting
Blinking green quickly	Camera updating

Set Up Your Camera

Follow the steps below to get started with your new camera.

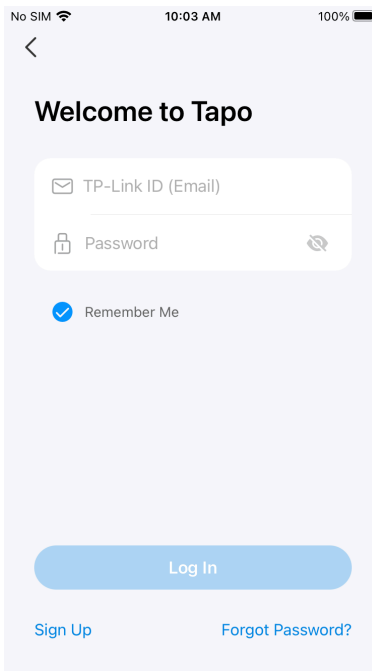
Step 1. Download Tapo App

Get the Tapo app from the App Store or Google Play, or by scanning the QR code below.



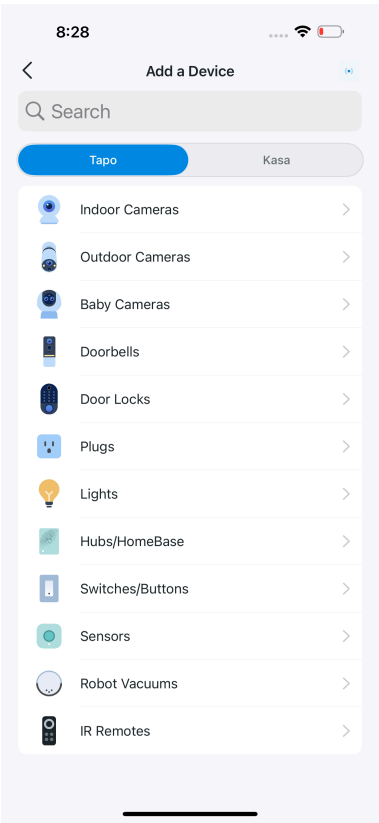
Step 2. Log In

Open the app, and log in with your TP-Link ID. If you don't have an account, create one first.



Step 3. Add Your Camera

Tap the + button, select Add Device in the app, and search for your model. Follow the app instructions to complete the setup.



Set Up Using Amazon Frustration-Free Setup

What is Amazon Frustration-Free Setup?

Note: Only Tapo C610 KIT supports Amazon frustration-free setup.

Amazon Frustration-Free Setup can help connect and set up Tapo smart devices in fewer steps, without having to remember and re-enter your Wi-Fi password on each device.

To use this feature, confirm the following:

- The new Tapo device supports Amazon FFS.
- The new Tapo device is purchased from Amazon.
- You have an Amazon FFS enabled Alexa device or router.
- You have saved your Wi-Fi information to Amazon by using Alexa echo.
- Your Tapo device and router are on the same network as your Alexa echo.

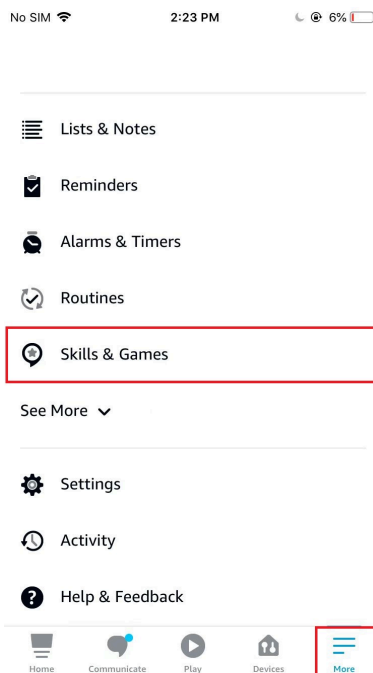
LED Indications during Amazon Frustration-Free Setup

LED	Status
Blinking red and blue	Ready for setup
Blinking blue	FFS setup in progress
Solid blue	Working properly

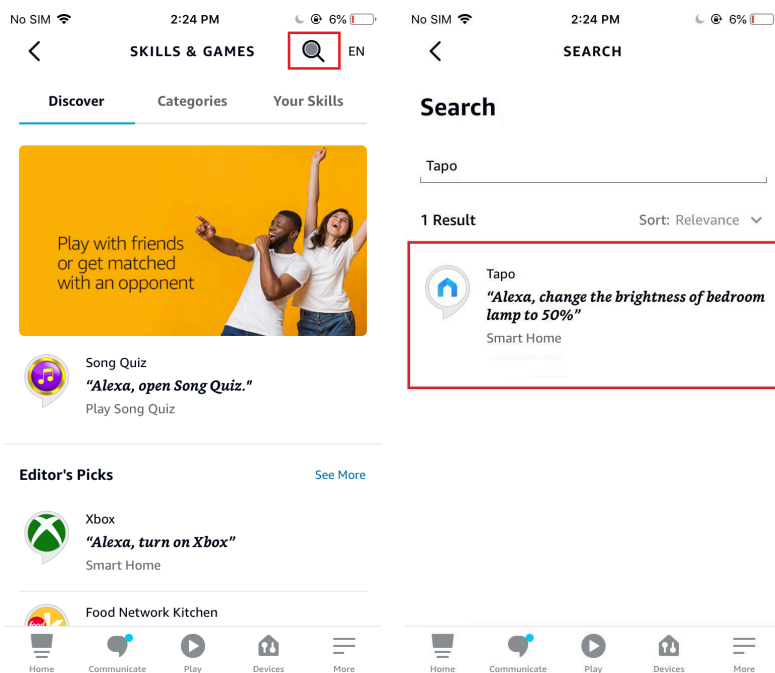
If the LED does not turn solid blue after a long time, you can try to add the Tapo device manually. (Press the Reset button on your Tapo device once. Then open the Tapo app, tap the + button on the page, select your device model, and follow the app instructions.)

How to use Amazon Frustration-Free Setup with Tapo devices

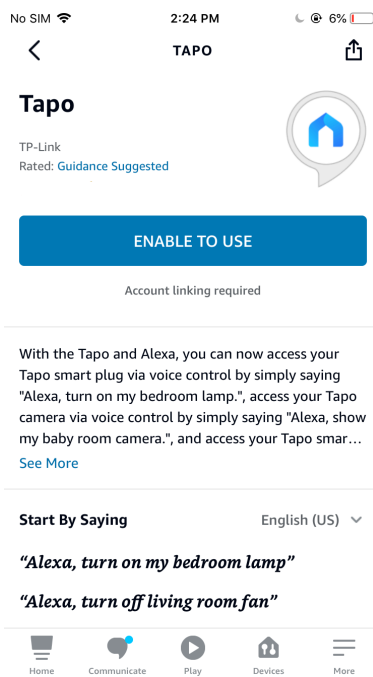
1. Open the Amazon Alexa app. Then tap More and select Skills & Games.



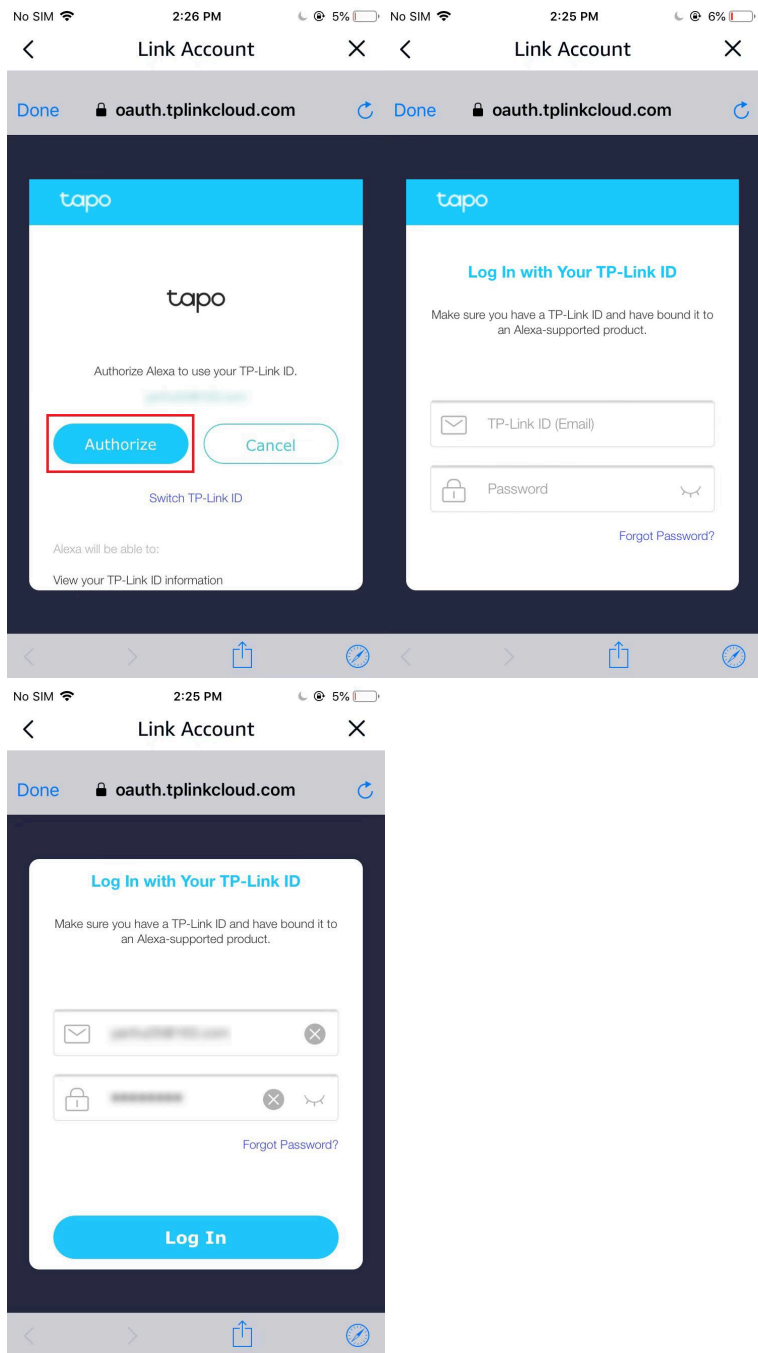
2. Enter Tapo in the search bar and choose Tapo.



3. Tap the ENABLE TO USE button.



4. Log in with your TP-Link ID that has bound to your Tapo device, and tap Authorize. After authorized successfully, the message Tapo has been successfully linked will come up.



5. Plug in your Tapo device and the setup will complete automatically in two minutes.

For setting up more Tapo devices, just plug in and enjoy!

Done!

If this device displays on the Home page in the Tapo app, it indicates this device has been successfully associated with your Amazon account and joined your Wi-Fi network automatically.

If this device does not display on the Home page in the Tapo app, try setting it up manually. (Tap the + button on the page, select your device model, and then follow the app instructions.)

Mounting Tips

Solar Panel Mounting Tips

The position and tilt angle of the solar panel greatly affect the solar efficiency.

1. Choose a location where the solar panel gets the most sunlight throughout the year.
2. Position the panel south-facing in the Northern Hemisphere or north-facing in the Southern Hemisphere. The recommended tilt angle between the panel and the horizontal ground is 35° ~

45°.

3. Regularly wipe the panel to remove dust and debris.

Camera Mounting Tips

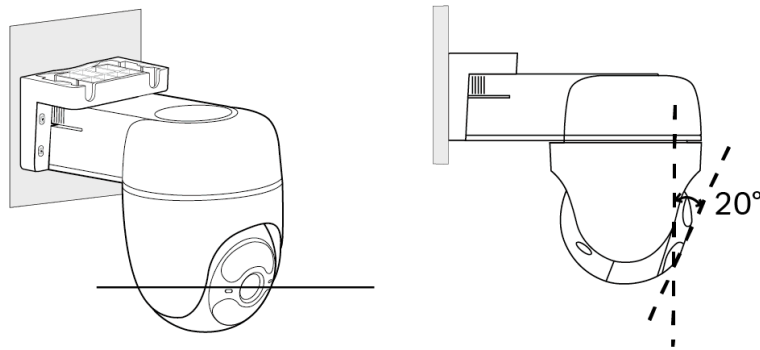
1. Avoid placing behind glass. Glass will obstruct the motion sensor of your camera.

2. Choose a proper location to mount your camera, or it will be triggered too often by false alarms.

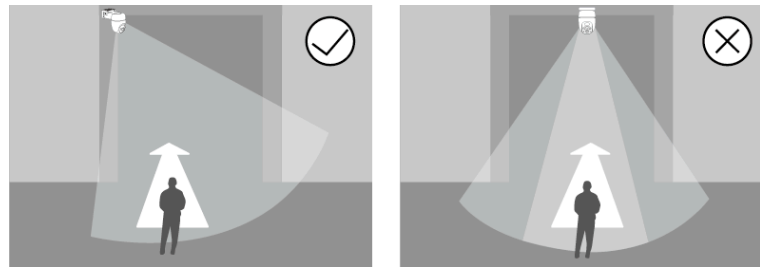
- Avoid pointing the camera directly at swaying trees.
- Avoid pointing the camera directly at vehicles and pedestrians on the road.
- Avoid pointing the camera directly at street lamps and sunlight.

3. Do not place the camera upside down.

4. For optimal results, keep the motion sensor level and tilt the camera lens down at an angle of about 20°.

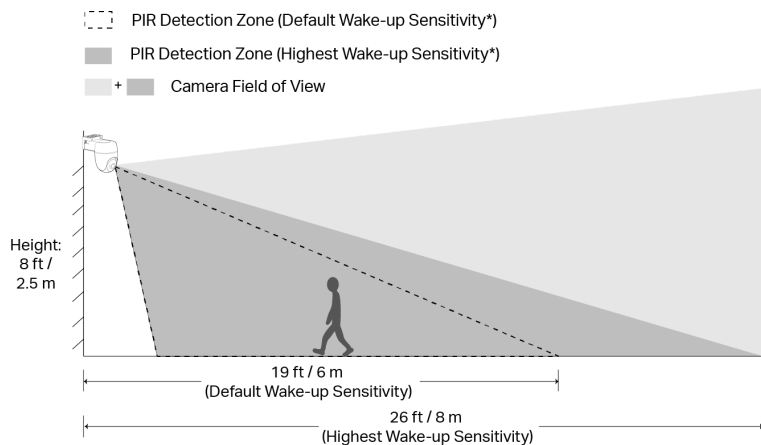


5. Mount your camera to the side so that movement goes across the lens' field of view to better trigger motion detection and AI detection.



*Do not mount facing the direction of movement.

6. For optimal detection performance, we recommend mounting the camera 8 ft (2.5 m) above the ground.



*You can adjust the sensitivity in Camera Settings > Detection > Wake-up Sensitivity.

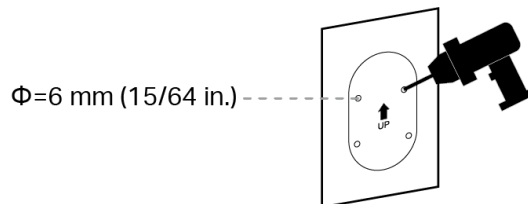
*The FOV and PIR detection zone shown is based on a camera mounted at 8 ft/2.5 m.

Mount Your Solar Panel & Camera

Option 1: Mount Solar Panel & Camera Together

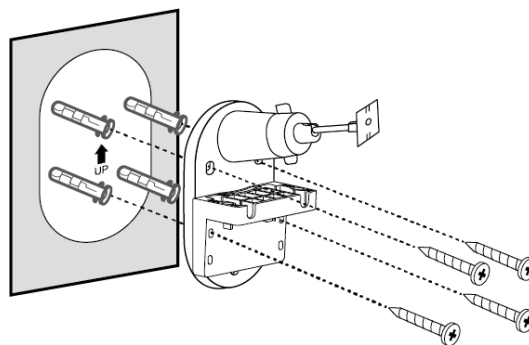
1. Drill Holes

Stick the mounting template to a solid and level wall surface. Drill four screw holes according to the template.

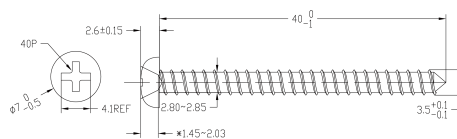


2. Secure the Bracket

Insert four anchors into the holes and use the screws to affix the bracket over the anchors.

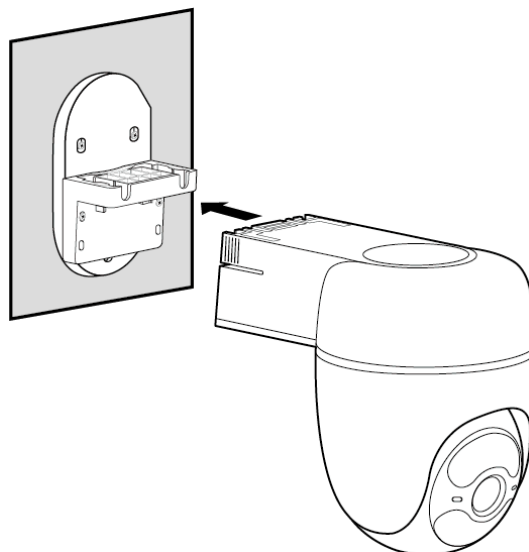


Mounting Screw Size:



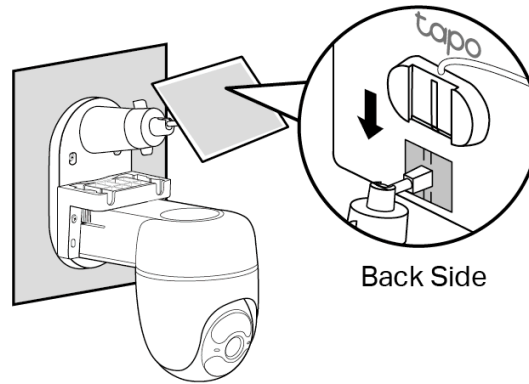
3. Attach the Camera

Slide the camera onto the camera bracket until it clicks into place.



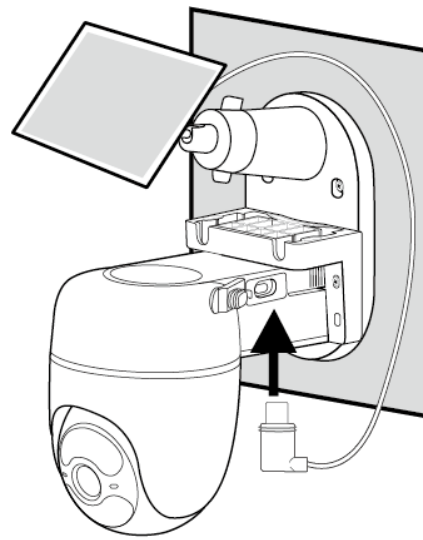
4. Install the Solar Panel

Slide the solar panel onto the solar panel mounting bracket until it clicks into place.



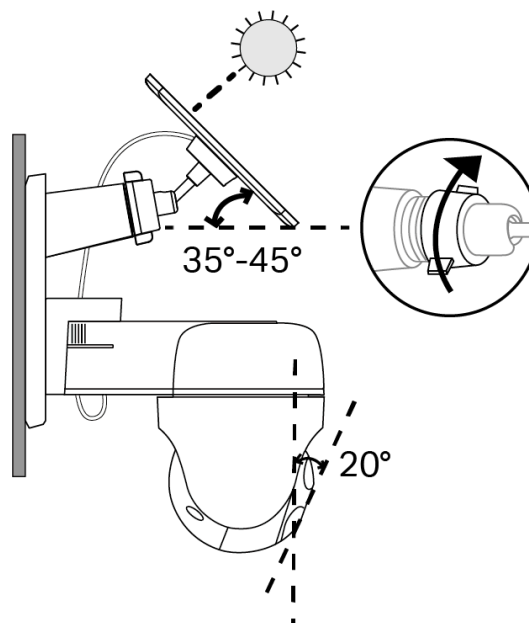
5. Connect the Camera to the Solar Panel

Insert the connector into the camera's charging port until it is snug to begin charging.



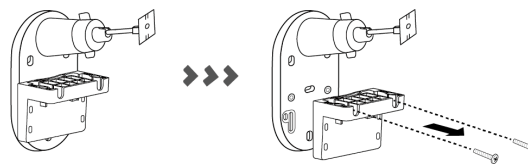
6. Adjust Camera & Solar Panel Angle

- Loosen the adjustable screw, tilt the solar panel to adjust the angle, and then tighten the adjustable screw. The recommended tilt angle between the panel and the horizontal ground is $35^{\circ} \sim 45^{\circ}$.
- Tilt the camera lens down at an angle of about 20° .



Option 2: Mount the Camera & Solar Panel Individually

Before you start, separate the camera bracket and the solar panel bracket by unscrewing the two bracket screws.

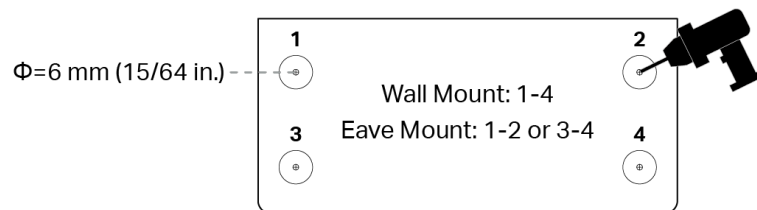


Mount the Camera

A: Wall Mount/Eave Mount

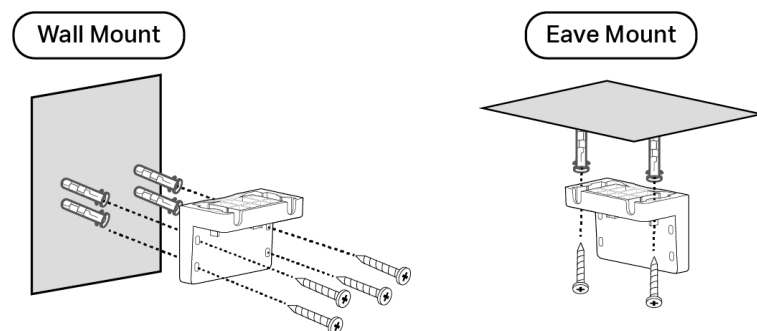
1. Drill Holes

Stick the mounting template to a solid and level wall surface. Drill four holes (Wall Mount) or two holes (Eave Mount) according to the template.

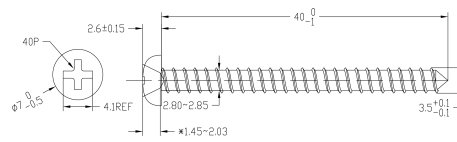


2. Secure the Bracket

Insert four anchors (Wall Mount) or two anchors (Eave Mount) into the holes and use the screws to affix the camera bracket over the anchors.

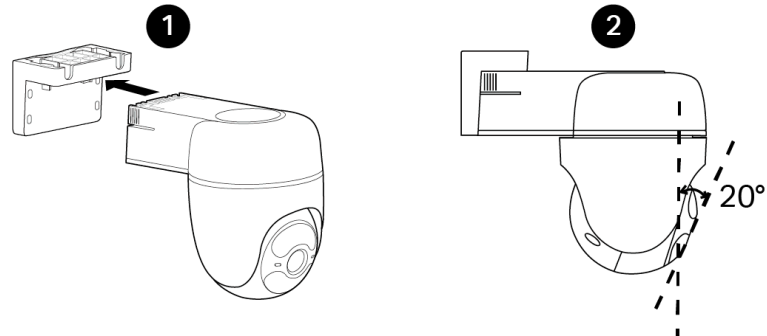


Mounting Screw Size:



3. Install the Camera

Slide the camera onto the camera bracket until it clicks into place. Tilt the camera lens down at an angle of about 20°.

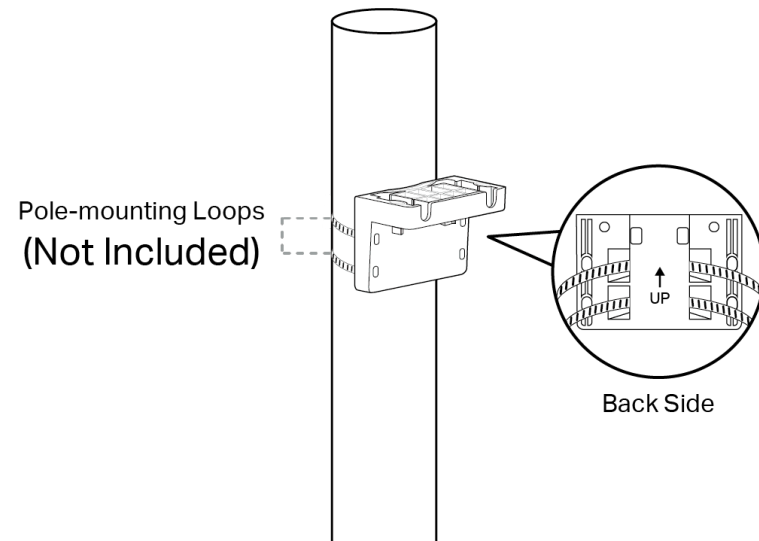


B: Pole Mount

1. Secure the Bracket

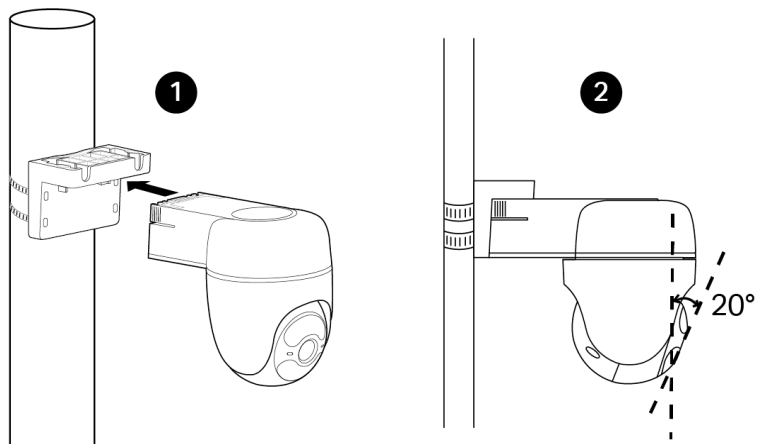
Mount the bracket on the pole using two pole-mounting loops (loop width ≤ 12 mm).

Note: Pole-mounting loops are not included.



2. Install the Camera

Slide the camera onto the camera bracket until it clicks into place. Tilt the camera lens down at an angle of about 20°.

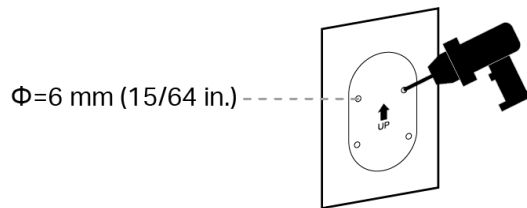


Mount the Solar Panel

1. Drill Holes

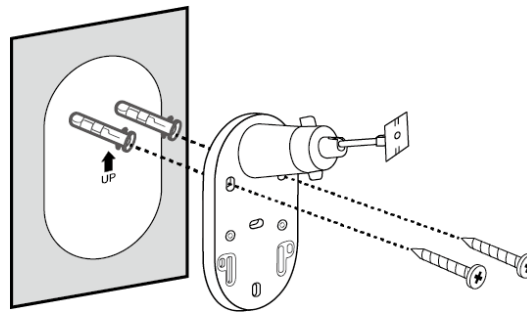
Stick the mounting template to a solid and level wall surface. Drill two upper screw holes according to the template.

Note: Drilling four holes can improve fixation, but it will prevent the installation of the decorative base cover.

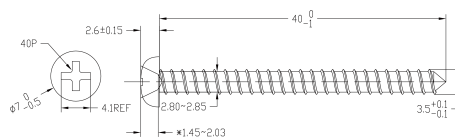


2. Secure the Bracket

Insert two anchors into the holes and use the screws to affix the solar panel bracket over the anchors.

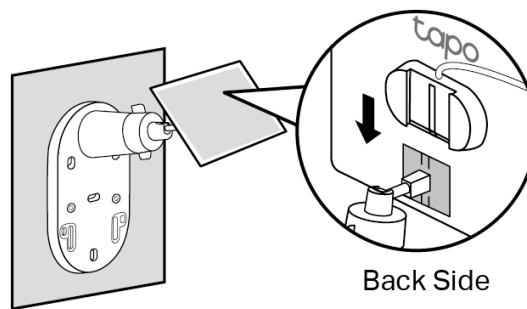


Mounting Screw Size:



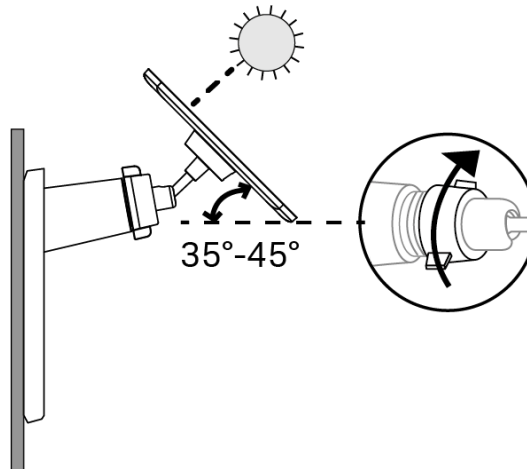
3. Install the Solar Panel

Slide the solar panel onto the solar panel mounting bracket until it clicks into place.



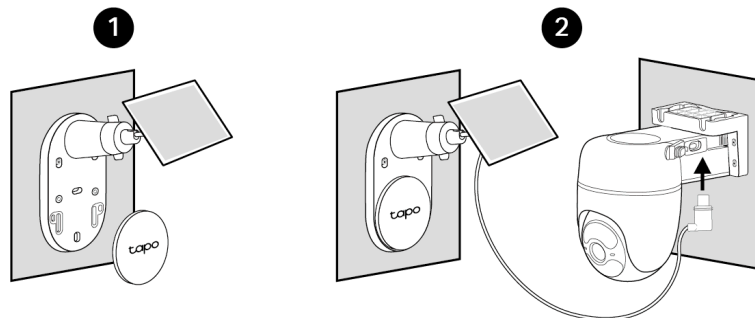
4. Adjust the Solar Panel Angle

Loosen the adjustable screw, tilt the solar panel to adjust the angle, and then tighten the adjustable screw. The recommended tilt angle between the panel and the horizontal ground is $35^{\circ} \sim 45^{\circ}$.



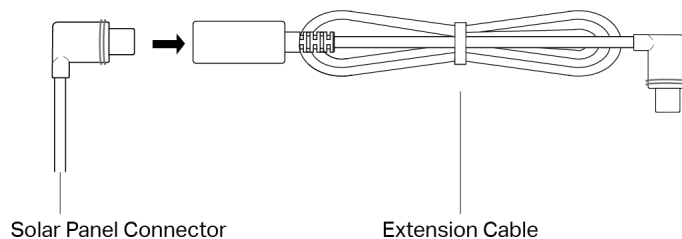
5. Install the Base Cover and Connect to the Camera

Install the decorative base cover. Insert the connector into the camera's charging port until it is snug to begin charging.



If the power cable is too short...

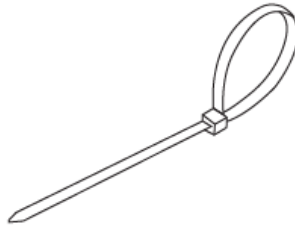
Extend the power cable using the provided extension cable. Insert the connector into the extension until snug and use the appropriate gasket when connecting the solar panel to your camera.



If the power cable is too long...

Use the cable zip tie provided to bundle up the excess cable. Once tightened, the zip tie cannot

be easily adjusted. To release the tie, you will need to cut the zip tie.



Support

For technical support, the setup videos, FAQs, warranty and more, please visit

<https://www.tapo.com/support/>



Authentication

FCC compliance information statement



Product Name: Solar-Powered Pan/Tilt Security Camera Kit

Model Number: Tapo C610 KIT, TC90 KIT

Responsible Party:

TP-Link Systems Inc.

Address: 10 Mauchly, Irvine, CA 92618

Website: <http://www.tp-link.com/us/>

Tel: +1 626 333 0234

Fax: +1 909 527 6804

E-mail: sales.usa@tp-link.com

This equipment has been tested and found to comply with the limits for a Class B digital device, pursuant to part 15 of the FCC Rules. These limits are designed to provide reasonable protection against harmful interference in a residential installation. This equipment generates, uses and can radiate radio frequency energy and, if not installed and used in accordance with the instructions, may cause harmful interference to radio communications. However, there is no guarantee that interference will not occur in a particular installation. If this equipment does cause harmful interference to radio or television reception, which can be determined by turning the equipment off and on, the user is encouraged to try to correct the interference by one or more of the following measures:

Reorient or relocate the receiving antenna.

Increase the separation between the equipment and receiver.

Connect the equipment into an outlet on a circuit different from that to which the receiver is connected.

Consult the dealer or an experienced radio/ TV technician for help.

This device complies with part 15 of the FCC Rules. Operation is subject to the following two conditions:

This device may not cause harmful interference.

This device must accept any interference received, including interference that may cause undesired operation.

Any changes or modifications not expressly approved by the party responsible for compliance could void the user's authority to operate the equipment.

Note: The manufacturer is not responsible for any radio or TV interference caused by unauthorized modifications to this equipment. Such modifications could void the user's authority to operate the equipment.

FCC RF Radiation Exposure Statement

This equipment complies with FCC RF radiation exposure limits set forth for an uncontrolled environment. This device and its antenna must not be co-located or operating in conjunction with any other antenna or transmitter.

"To comply with FCC RF exposure compliance requirements, this grant is applicable to only Mobile Configurations. The antennas used for this transmitter must be installed to provide a separation distance of at least 20 cm from all persons and must not be co-located or operating in conjunction with any other antenna or transmitter."

We, TP-Link Systems Inc., has determined that the equipment shown as above has been shown to comply with the applicable technical standards, FCC part 15. There is no unauthorized change is made in the equipment and the equipment is properly maintained and operated.

Issue Date: 2025-09-02

CE Mark Warning**OPERATING FREQUENCY (the maximum transmitted power)**

2412MHz-2472MHz (20dBm)

2402MHz-2480MHz (10dBm)

EU Declaration of Conformity

TP-Link hereby declares that the battery camera is in compliance with the essential requirements and other relevant provisions of directives 2014/53/EU, 2009/125/EC, 2011/65/EU and (EU)2015/863.

The original EU Declaration of Conformity may be found at

<https://www.tapo.com/en/support/ce/>.

TP-Link hereby declares that the solar panel is in compliance with the essential requirements and other relevant provisions of directives 2014/30/EU, 2014/35/EU, 2011/65/EU and (EU)2015/863.

The original EU declaration of conformity may be found at

<https://www.tapo.com/en/support/ce/>.

RF Exposure Information

This device meets the EU requirements (2014/53/EU Article 3.1a) on the limitation of exposure of the general public to electromagnetic fields by way of health protection.

The device complies with RF specifications when the device used at 20 cm from your body.

UKCA Mark**UK Declaration of Conformity**

TP-Link hereby declares that the battery camera is in compliance with the essential requirements and other relevant provisions of the Radio Equipment Regulations 2017.

The original UK Declaration of Conformity may be found at

<https://www.tapo.com/support/ukca/>.

TP-Link hereby declares that the solar panel is in compliance with the essential requirements

and other relevant provisions of the Electromagnetic Compatibility Regulations 2016 and Electrical Equipment (Safety) Regulations 2016.

The original UK declaration of conformity may be found at
<https://www.tapo.com/support/ukca/>.

Canadian Compliance Statement

This device contains licence-exempt transmitter(s)/receiver(s) that comply with Innovation, Science and Economic Development Canada's licence-exempt RSS(s). Operation is subject to the following two conditions:

1. This device may not cause interference.
2. This device must accept any interference, including interference that may cause undesired operation of the device.

L'émetteur/récepteur exempt de licence contenu dans le présent appareil est conforme aux CNR d'Innovation, Sciences et Développement économique Canada applicables aux appareils radio exempts de licence. L'exploitation est autorisée aux deux conditions suivantes :

1. l'appareil ne doit pas produire de brouillage;
2. l'utilisateur de l'appareil doit accepter tout brouillage radioélectrique subi, même si le brouillage est susceptible d'en compromettre le fonctionnement

Radiation Exposure Statement:

This equipment complies with IC radiation exposure limits set forth for an uncontrolled environment. This equipment should be installed and operated with minimum distance 20cm between the radiator & your body.

Déclaration d'exposition aux radiations:

Cet équipement est conforme aux limites d'exposition aux rayonnements IC établies pour un environnement non contrôlé. Cet équipement doit être installé et utilisé avec un minimum de 20 cm de distance entre la source de rayonnement et votre corps.

Industry Canada Statement

CAN ICES-003 (B)/NMB-003 (B)



Korea Warning Statements:

당해 무선설비는 운용중 전파혼신 가능성이 있음.

NCC Notice & BSMI Notice

注意！

取得審驗證明之低功率射頻器材，非經核准，公司、商號或使用者均不得擅自變更頻率、加大功率或變更原設計之特性及功能。

低功率射頻器材之使用不得影響飛航安全及干擾合法通信；經發現有干擾現象時，應立即停用，並改善至無干擾時方得繼續使用。

前述合法通信，指依電信管理法規定作業之無線電通信。

低功率射頻器材須忍受合法通信或工業、科學及醫療用電波輻射性電機設備之干擾。

為避免本器材影像畫面遭偷窺或擷取，本器材使用者應先修改預設密碼，並定期更新密碼。

安全諮詢及注意事項

請使用原裝電源供應器或只能按照本產品注明的電源類型使用本產品。

清潔本產品之前請先拔掉電源線。請勿使用液體、噴霧清潔劑或濕布進行清潔。

插槽與開口供通風使用，以確保本產品的操作可靠並防止過熱，請勿堵塞或覆蓋開口。

請勿將本產品置放於靠近熱源的地方。除非有正常的通風，否則不可放在密閉位置中。

不要私自拆開機殼或自行維修，如產品有故障請與原廠或代理商聯繫。

請勿將本產品浸入水或者其他液體中。

安裝高度不得超過 2 公尺。

工作溫度：-20°C ~ 45°C (-4°F ~ 113°F)

請使用符合BSMI認證的電源供應器(5Vdc, 至少2A)並其輸出需符合LPS/PS2。

限用物質含有情況標示聲明書

設備名稱：Solar-Powered Pan/Tilt Security Camera Kit					型號 (型式)：	
Tapo C610 KIT, TC90 KIT					Type designation (Type)	
Equipment name						
Type designation (Type)						
單元 Unit	限用物質及其化學符號 Restricted substances and its chemical symbols					
	鉛 Lead (Pb)	汞 Mercury (Hg)	鎘 Cadmium (Cd)	六價鉻 Hexavalent chromium (Cr+6)	多溴聯苯 Polybrominated biphenyls (PBB)	多溴二苯醚 Polybrominated diphenyl ethers (PBDE)
PCB	○	○	○	○	○	○
外殼	○	○	○	○	○	○
USB 線	○	○	○	○	○	○
其他 及其 配件	—	○	○	○	○	○
備考1. “超出0.1 wt %” 及 “超出0.01 wt %” 係指限用物質之百分比含量超出百分比含量基準 值 Note 1: “Exceeding 0.1 wt %” and “exceeding 0.01 wt %” indicate that the percentage content of the restricted substance exceeds the reference percentage value of presence condition. 備考2. “○” 係指該項限用物質之百分比含量未超出百分比含量基準值。 Note 2: “○” indicates that the percentage content of the restricted substance does not exceed the percentage of reference value of presence. 備考3. “-” 係指該項限用物質為排除項目。 Note 3: The “-” indicates that the restricted substance corresponds to the exemption.						



Продукт сертифіковано згідно з правилами системи УкрСЕПРО на відповідність вимогам нормативних>Продукт сертифіковано згідно з правилами системи УкрСЕПРО на відповідність вимогам нормативних документів та вимогам, що передбачені чинними законодавчими актами України.



Safety Information

For Solar Panel:

- Keep the device away from fire or hot environments. DO NOT immerse in water or any other liquid.
- Do not attempt to disassemble, repair, or modify the device. If you need service, please contact us.

For Battery Camera:

- This equipment can be powered only by equipments that comply with Power Source Class 2 (PS2) or Limited Power Source (LPS) defined in the standard of IEC 62368-1.
- Do not use damaged charger or USB cable to charge the device.
- Do not use any other chargers than those recommended.
- Do not use the device where wireless devices are not allowed.
- Adapter shall be easily accessible.
- Keep the device away from fire or hot environments. DO NOT immerse in water or any other liquid.
- Do not disassemble, repair or modify the product.
- Do not place near automatically controlled devices such as fire alarms. Radio waves emitted from this product may cause such devices to malfunction resulting in an accident.
- Observe restrictions on using wireless products in fuel depots, chemical plants or when blasting operations are in progress.
- Do not use liquid to clean the product. Only use a dry cloth.
- Never put metal objects inside the product. If a metal object enters the product turn off the circuit breaker and contact an authorised electrician.
- This product is not intended to be used when providing medical care. Consult the manufacturer of any personal medical devices, such as pacemakers or hearing aids to determine if they are adequately shielded from external RF (radio frequency) energy.
- Do not use this product in health care facilities. Hospitals or health care facilities may be using equipment that could be sensitive to external RF energy.
- Do not place heavy objects on top of the product.
- When you leave the product unused for a long time unplug the product from the power outlet.
- This product may interfere with other electronic products such as TV, radios, personal computers, phones or other wireless devices.
- This equipment shall be installed at a height of less than 2 meters (6.5 feet).

CAUTION!

Avoid replacement of a battery with an incorrect type that can defeat a safeguard.

Avoid disposal of a battery into fire or a hot oven, or mechanically crushing or cutting of a battery, that can result in an explosion.

Do not leave a battery in an extremely high temperature surrounding environment that can result in an explosion or the leakage of flammable liquid or gas; Do not leave a battery subjected to extremely low air pressure that may result in an explosion or the leakage of flammable liquid or gas.

















- Operating Temperature: -20°C ~ 45°C (-4°F ~ 113°F)








Please read and follow the above safety information when operating the device. We cannot guarantee that no accidents or damage will occur due to improper use of the device. Please use this product with care and operate at your own risk.

Explanation of the symbols on the product label

Note: The product label is underneath the camera base. Symbols may vary from products.

注意：產品標籤位於攝影機底座下方。符號可能因產品而異。

Symbol 符號解釋	Explanation 解釋
	Class II equipment Class II 設備
	Class II equipment with functional earthing 具有功能接地的Class II 設備
	Alternating current 交流電
	DC voltage 直流電壓
	Polarity of output terminals 輸出端子極性
	Indoor use only 僅限室內使用
	Dangerous voltage 危險電壓
	Caution, risk of electric shock 注意·有觸電危險
	Energy efficiency Marking 能源效率標示
	Protective earth 保護地線
	Earth 地線
	Frame or chassis 機架接地
	Functional earthing 功能地線
	Caution, hot surface 警告·表面高溫
	Caution 警告
	Operator's manual 操作手冊

Symbol 符號解釋	Explanation 解釋
	Stand-by 待機
	"ON"/"OFF" (push-push) 「開」/「關」(按壓式)
	Fuse 保險絲
	Fuse is used in neutral N 保險絲用於中性線N
	RECYCLING This product bears the selective sorting symbol for Waste electrical and electronic equipment (WEEE). This means that this product must be handled pursuant to European directive 2012/19/EU in order to be recycled or dismantled to minimize its impact on the environment. User has the choice to give his product to a competent recycling organization or to the retailer when he buys a new electrical or electronic equipment. 回收利用 本產品標示有「廢棄電氣電子設備 (WEEE) 」的分類回收標誌。這表示本產品必須依據歐盟指令 2012/19/EU 進行妥善回收或拆解，以減少對環境的影響。 使用者可選擇將本產品交給合格的回收機構，或在購買新電器或電子設備時，交回給零售商進行回收處理。
	Caution, avoid listening at high volume levels for long periods 注意，避免長時間以高音量收聽
	Disconnection, all power plugs 斷開所有電源插頭

Sign Up for News & Offers

Email Address

Sign Up

Follow Us

About

About Us

Corporate Information

Our Security Commitment

Sustainability

Privacy Policy

Ethical Violation Complaint

Accessibility

Contact Us

Press

News

Blog

Awards

Security Advisory

Learning Center

Technology Library



©2025 TP-Link Systems Inc. and its affiliated companies. All rights reserved.

TP-Link, Tapo, Kasa, Omada, VIGI, Aginet, HomeShield, and Tapo Care branded products are products of TP-Link Systems Inc. or its affiliates. Note: Some services and materials may require you to accept additional terms and conditions before access or use. References to "TP-Link" may include TP-Link Systems Inc., its subsidiaries, or business units within the TP-Link corporate structure, as applicable. The materials provided, including but not limited to press releases, presentations, blog posts, and webcasts, are current as of the date of publication and may be superseded by subsequent updates.

Worldwide / English