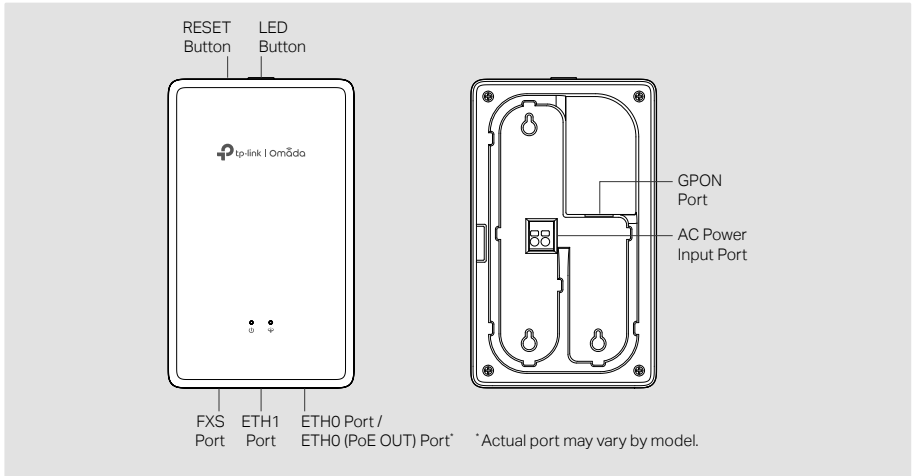


Quick Installation Guide

Wall Plate GPON Access Point

Note: EAP615GP-Wall is used as an example throughout the Guide. Images may differ from your actual product.
©2024 TP-Link 7106511633 REV1.1.0

1 Hardware Overview



LED	Indication
Power	On: Working normally/Initializing. Off: Working abnormally/Power off/LED is turned off. Flash: <ul style="list-style-type: none">Flash twice: Initialization is complete.Flash once per second: The EAP is upgrading.Quick flash: The EAP is resetting or the Omada Controller is locating the EAP.*Slow flash: The EAP is in the isolated state.
GPON	Green On: The EAP is registered with the OLT. Flash Green: The EAP is trying to register with the OLT. Flash Red: No optical signal is received or the received signal is too weak. Red On: The EAP is blocked by the OLT or not transmitting an optical signal. Off: The EAP is initializing or works as a mesh AP.

* When the Locate feature is activated in the Omada Controller, the LED will flash for 10 minutes to help you locate and identify the device. You can disable this feature manually to stop the device from flashing.

Button	Description
RESET	With the EAP powered on, press and hold the button for about 5 seconds until the Power LED flashes, then release the button. The EAP will restore to factory settings.
LED	Press the button to turn on/off the LEDs.

Interface	Description
FXS	Connect to a phone to make and receive calls over the internet.
ETH0 / ETH0 (PoE OUT)*	Connect to a client device to transmit data. *If ETH0 (PoE OUT) Port is provided instead of ETH0 Port, it also supports PoE Out to supply 802.3af power.
ETH1	Connect to a client device to transmit data.
GPON	Connect to the fiber to transmit optical signals.
AC Power Input	Connect to the power supply via AC power cable.

2 Pre-Installation Checklist

Before installation, ensure that you have the following items:

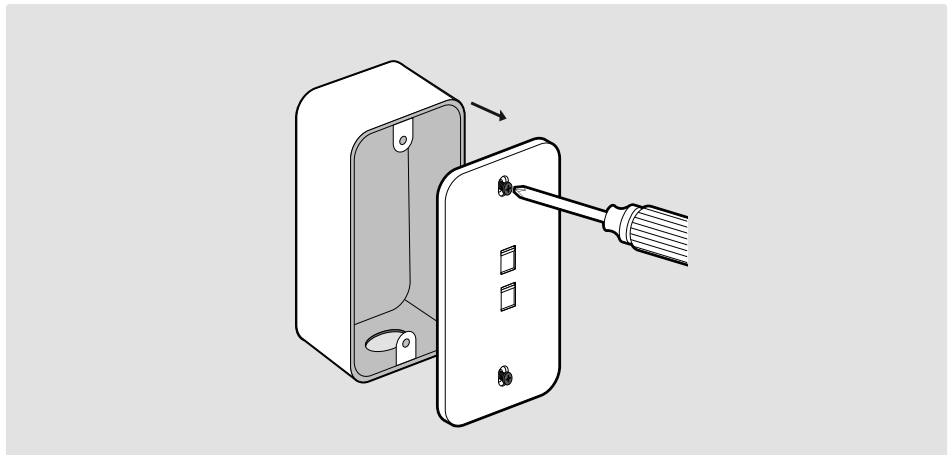
- Pre-installed wall junction box (with accessible AC power cable and optical fiber)
- Phillips screwdriver
- Wire stripper
- Wire crimper

3 Installation Steps

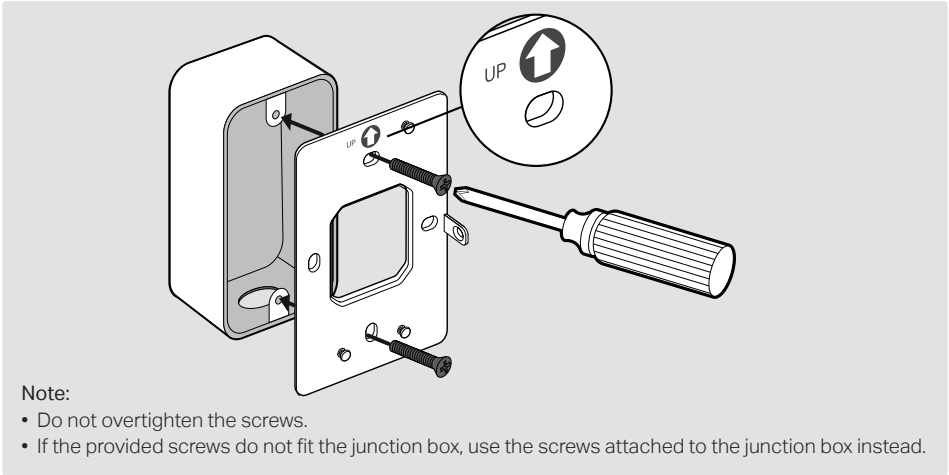
-
- The product can only be installed by skilled person!
 - An all-pole mains switch in accordance with IEC 62368-1 Annex L shall be incorporated in the electrical installation of the building. And the contact separation of the switch shall not less than 3 mm.

Note: The Standard US wall junction box is used as an example below. Installation may vary slightly with different junction boxes.

- Detach the faceplate of the junction box with a screwdriver.

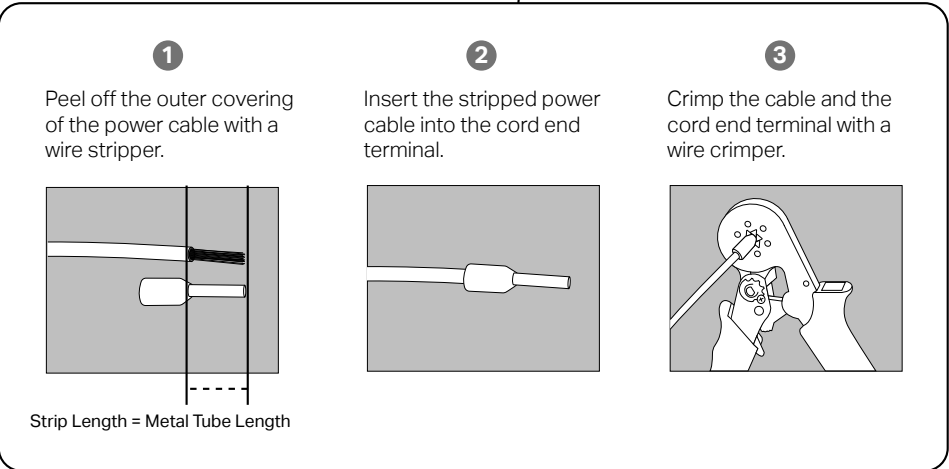
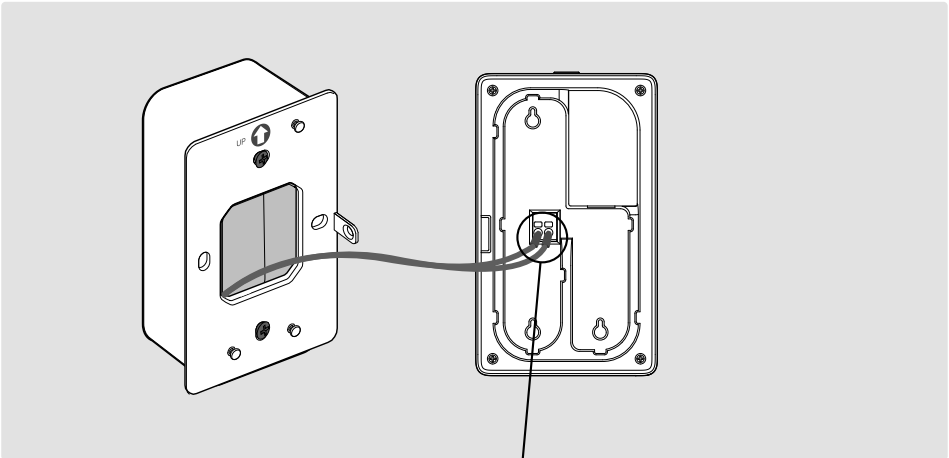


- Secure the mounting bracket to the junction box with the provided screws.

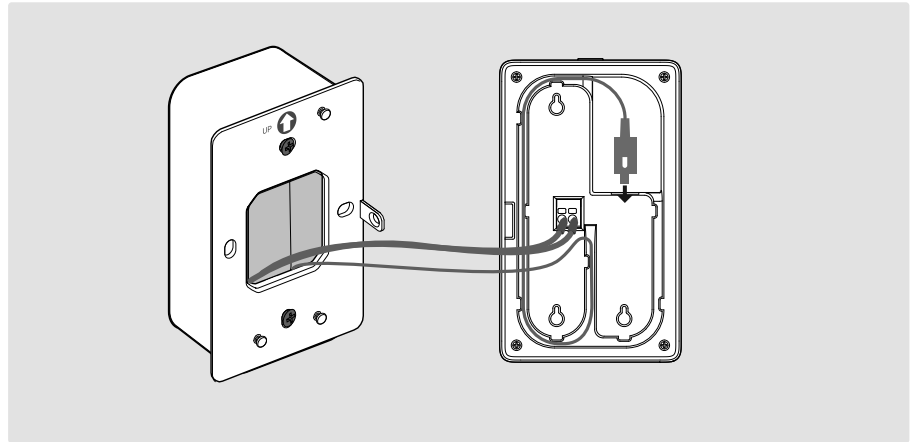


- Connect the AC power cable to the EAP's AC Power Input Port with the provided cord end terminals.

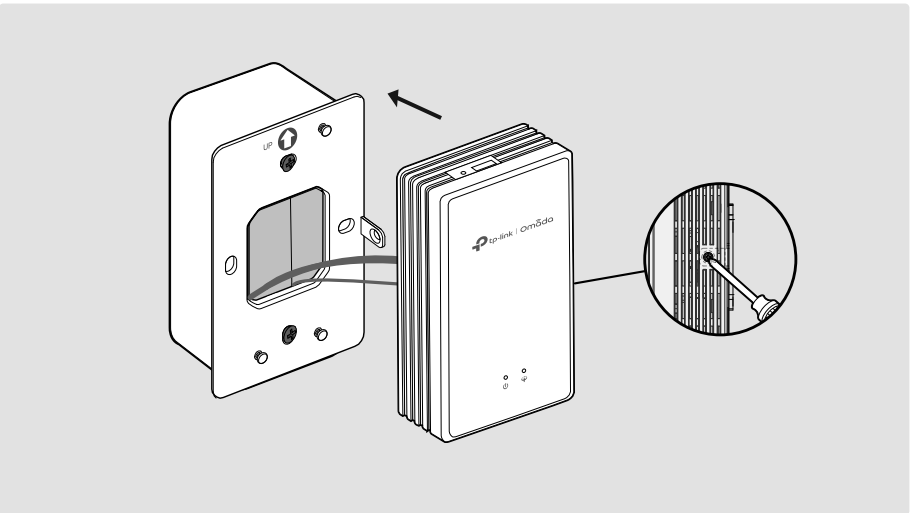
Note: For the United States and Canada, the required size of the AC power cable (branch circuit conductor) is 14AWG – 12AWG. For other regions, the size of the AC power cable should be in accordance with the requirements of local building wiring standards but should not exceed 18AWG – 12AWG.



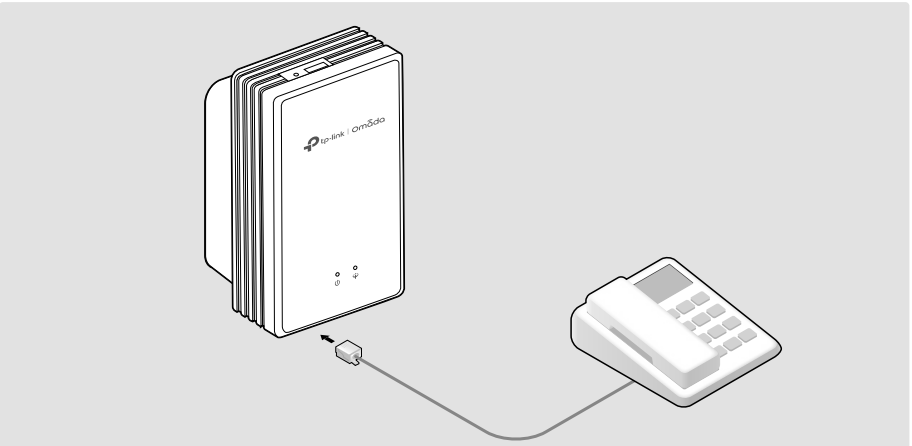
- Remove the anti-dust plug and connect the optical fiber to the EAP's GPON Port. Route excess fiber behind the device.



- Attach the EAP to the mounting bracket. Secure them with the provided screw.



- Connect your phone to the EAP's FXS port. If you don't need phone service, skip this step.

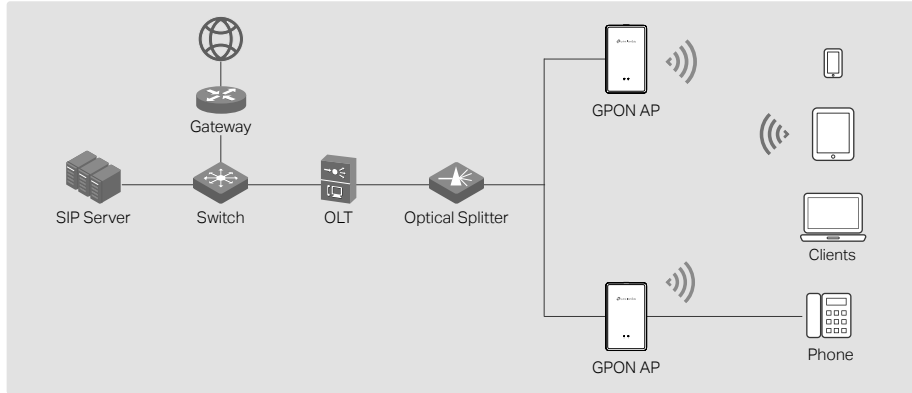


4 Software Configuration

Choose a method to set up your EAPs:

- **Method 1: Standalone Mode**
For configuring and managing EAPs separately (Convenient for a small network with only a few devices)
- **Method 2: Controller Mode**
For configuring and managing EAPs in batches on a central platform, namely an **Omada Controller**.

Method 1: Standalone Mode



Note:

- Before you start, be sure to **power up** and **connect** your devices according to the above topology.
- **A DHCP server** (typically a gateway/router with the DHCP function enabled) is required to assign IP addresses to the EAPs and clients in your local network.

1. Connect your device to the EAP by using the default SSIDs printed at the product.
2. Launch a web browser and enter <https://tplinkeap.net> in the address bar. Use **admin** for both Username and Password to log in.



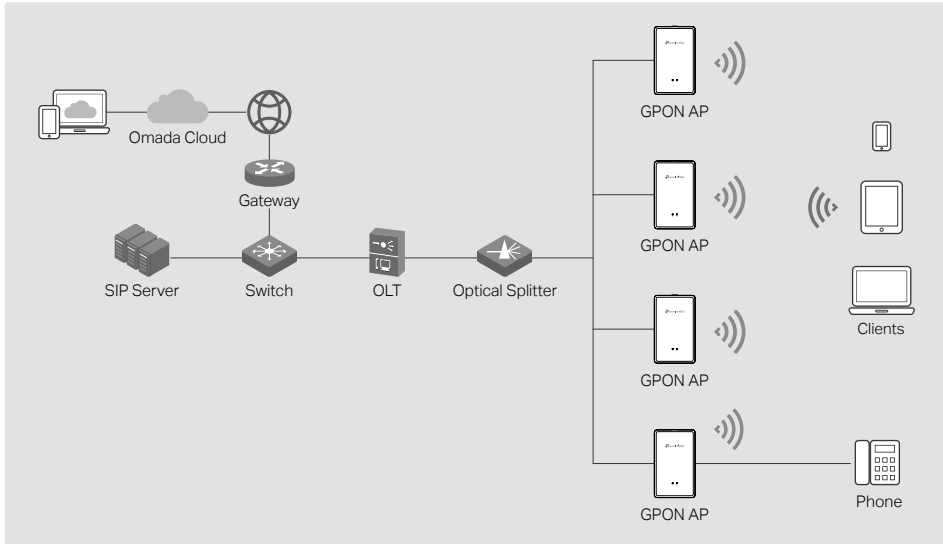
3. Set up a new Username and Password for secure management. Then you can configure the AP. You need to register the GPON AP and configure basic settings.
4. (Optional) Configure the phone service.

Go to the **Telephony** page and set up the telephone number with the information provided by your telephony service provider. Now you can make phone calls over the internet.

Method 2: Controller Mode

Choose a type of Omada Controller:

- **Type 1: Omada Cloud-Based Controller**
The Omada Cloud-Based Controller is a good alternative that does not require installing the software controller on a PC or purchasing a hardware controller.



Note:

- Before you start, be sure to **power up** and **connect** your devices according to the above topology.
- **A DHCP server** (typically a gateway/router with the DHCP function enabled) is required to assign IP addresses to the EAPs and clients in your local network.

1. Launch a web browser and enter <https://omada.tplinkcloud.com> in the address bar. Log in with your TP-Link ID.



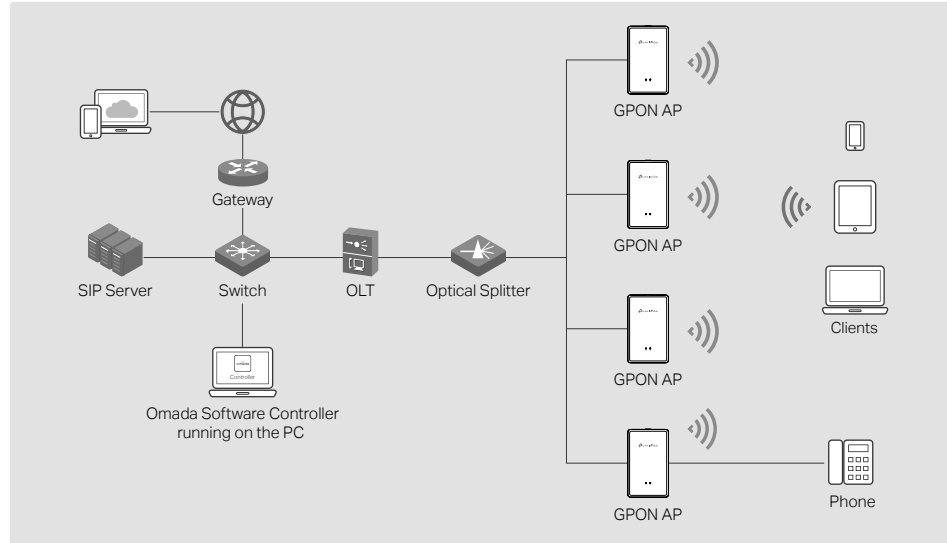
2. Click **+ Add** and add a Cloud-Based Controller. Then you can launch the controller to adopt devices. You need to register the GPON APs and configure basic settings.
3. (Optional) Configure the phone service.

Launch your controller and go to **Settings > VoIP** to configure the phone service with the information provided by your telephony service provider. For detailed instructions, refer to your controller's user guide.

- **Type 2: Omada Software Controller**

On a PC with Windows OS or Linux OS, download the software controller from <https://www.tp-link.com/support/download/omada-software-controller/>. Then run the file and follow the wizard to install and launch the controller.

The software controller must remain active on your computer to manage your devices.



Note:

- Before you start, be sure to **power up** and **connect** your devices according to the above topology.
- **A DHCP server** (typically a gateway/router with the DHCP function enabled) is required to assign IP addresses to the EAPs and clients in your local network.
- The Omada Controller must have network access to your Omada devices (the gateway/router, switch, and EAPs) in order to find, adopt, and manage them.

1. Open the controller's web page.

Launch the software controller on your PC. After the initiation process, the controller will automatically open its web page. If not, launch it manually.

2. On the controller's web page, follow the wizard to complete the quick setup. Then you can launch the controller to adopt devices. You need to register the GPON APs and configure basic settings.
3. (For Remote Management) You can remotely access and manage your controller via the Omada Cloud Service.

Note: Before you start, make sure that both your controller and PC can access the internet.

- a. Make sure that **Cloud Access** is enabled on your controller and your controller has been bound with your TP-Link ID. On the controller's web page, go to **Settings > Cloud Access** to enable Cloud Access and bind your TP-Link ID. If you have set it up in the quick setup, skip this step.
- b. Launch a web browser and enter <https://omada.tplinkcloud.com> in the address bar. Enter your TP-Link ID and password to log in. A list of controllers that have been bound with your TP-Link ID will appear. Then you can launch the controller to manage devices.

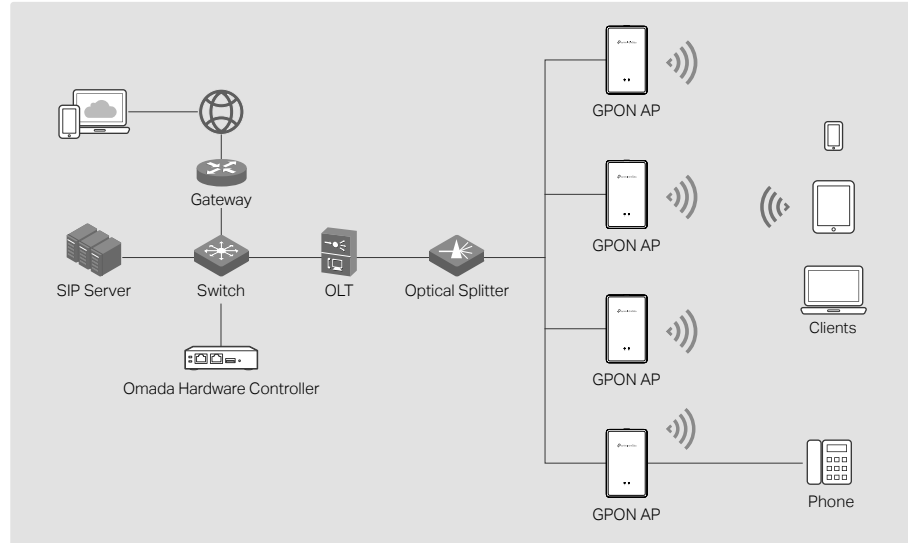
4. (Optional) Configure the phone service.

Launch your controller and go to **Settings > VoIP** to configure the phone service with the information provided by your telephony service provider. For detailed instructions, refer to your controller's user guide.

- **Type 3: Omada Hardware Controller**

If you have no spare PC to keep running the software controller in the network, you can purchase a hardware controller.

For more details, refer to the Installation Guide of your hardware controller.



Note:

- Before you start, be sure to **power up** and **connect** your devices according to the above topology.
- **A DHCP server** (typically a gateway/router with the DHCP function enabled) is required to assign IP addresses to the EAPs and clients in your local network.
- The Omada Controller must have network access to your Omada devices (the gateway/router, switch, and EAPs) in order to find, adopt, and manage them.

1. Open the controller's web page.

Find the IP address of the controller on the gateway router's DHCP client list. Enter the IP address in the address bar to open its web page.

2. On the controller's web page, follow the wizard to complete the quick setup. Then you can launch the controller to adopt devices. You need to register the GPON APs and configure basic settings.

3. (For Remote Management) You can remotely access and manage your controller via the Omada Cloud Service.

Note: Before you start, make sure that both your controller and PC can access the internet.

- a. Make sure that **Cloud Access** is enabled on your controller. By default, **Cloud Access** is enabled. Make sure that the Cloud LED is flashing slowly.
- b. Launch a web browser and enter <https://omada.tplinkcloud.com> in the address bar. Enter your TP-Link ID and password to log in. Click **+ Add** and add your hardware controller. Then you can launch the controller to manage devices.

4. (Optional) Configure the phone service.

Launch your controller and go to **Settings > VoIP** to configure the phone service with the information provided by your telephony service provider. For detailed instructions, refer to your controller's user guide.

Omada App

With the TP-Link Omada app, you can access and manage your Omada devices at a local site or remotely with a tap on your phone. You can download and install the TP-Link Omada app from the App Store or Google Play.



Safety Information

- Keep the device away from water, fire, humidity or hot environments.
- Do not attempt to disassemble, repair, or modify the device. If you need service, please contact us.
- Do not use the device where wireless devices are not allowed.
- (For products with PoE Out) The PoE ports shall not be used to charge lithium batteries or devices supplied by lithium batteries.

EU Declaration of Conformity

TP-Link hereby declares that the device is in compliance with the essential requirements and other relevant provisions of directives 2014/53/EU, 2009/125/EC, 2011 /65/EU and (EU) 2015/863.

The original EU Declaration of Conformity may be found at <https://www.tp-link.com/en/support/ce/>

UK Declaration of Conformity

TP-Link hereby declares that the device is in compliance with the essential requirements and other relevant provisions of the Radio Equipment Regulations 2017.

The original UK Declaration of Conformity may be found at <https://www.tp-link.com/support/ukca/>

For detailed configurations, refer to the user guides of the controller and EAPs. The guides can be found on the download center of our official website:

<https://www.tp-link.com/support/download/?type=smb>

To ask questions, find answers, and communicate with TP-Link users or engineers, please visit <https://community.tp-link.com/business> to join the TP-Link Community.

For technical support, user guides, and other information, please visit <https://www.tp-link.com/support/?type=smb>, or simply scan the QR code.

