

Quick Installation Guide

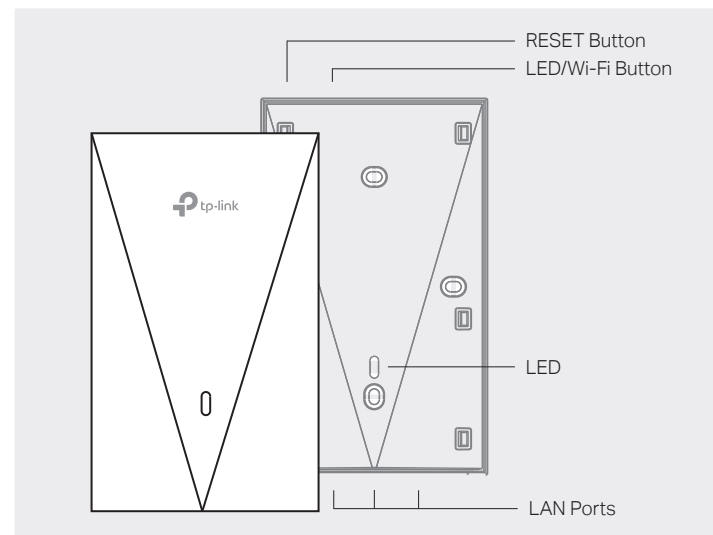
Wireless Wall Plate Access Point

Note: Images may differ from your actual product.

©2023 TP-Link 7106510354 REV1.1.0

1 Hardware Overview

Front Panel



RESET Button

With the AP powered on, press and hold the button for about 5 seconds until the LED flashes, then release the button. The AP will restore to factory default settings.

LED/Wi-Fi Button

When the AP is working in Standalone Mode and enabled with Wi-Fi Control, press the button to turn on/off both the Wi-Fi and LED. In the other cases, press the button to turn on/off the LED only.

LAN Ports

Wired devices can be connected to the LAN ports via Ethernet cables and access the network.

LED Indicator

On: Working normally/Initializing.

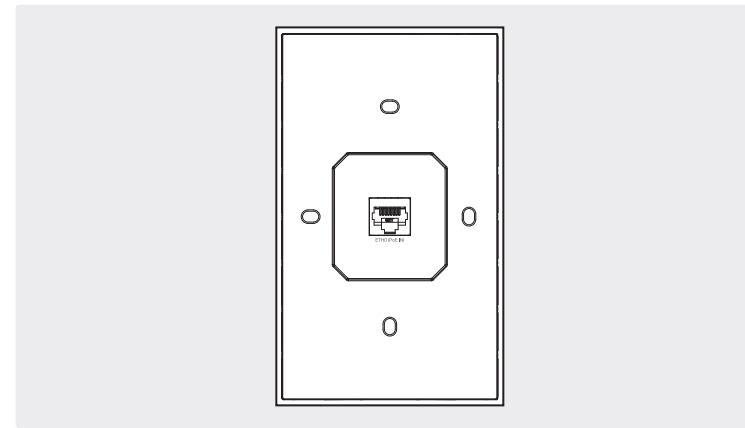
Off: Working abnormally/Power off/LED is turned off.

Flash:

- Flash twice: Initialization is completed.
- Flash once per second: The AP is upgrading.
- Flash quickly: The AP is resetting or the Omada controller is locating the AP*.

* When the Locate feature is activated in the Omada controller, the LED flashes quickly to locate and identify the device. The LED will flash for 10 minutes, or you can disable the feature manually to stop it flashing.

Rear Panel



ETH0 (PoE IN) Port

Connected to a PSE (Power Sourcing Equipment), such as a PoE switch, for both data transmission and Power. The PSE supports 802.3af/at inputs and complies with Power Source Class 2 (PS2) or Limited Power Source (LPS) of IEC 62368-1.

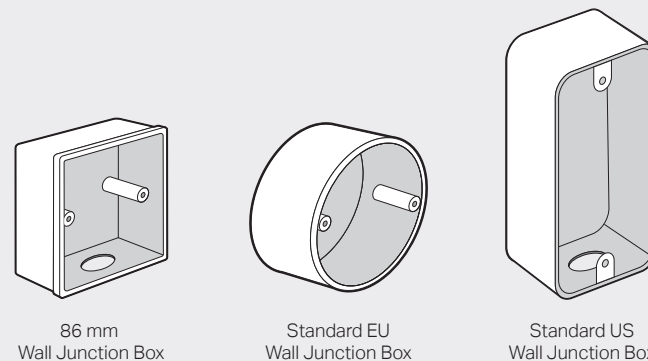
2 Hardware Installation

Before installation, be sure that you have the following items:

- A pre-installed wall junction box
- An RJ45 plug
- A Phillips screwdriver
- A PoE switch

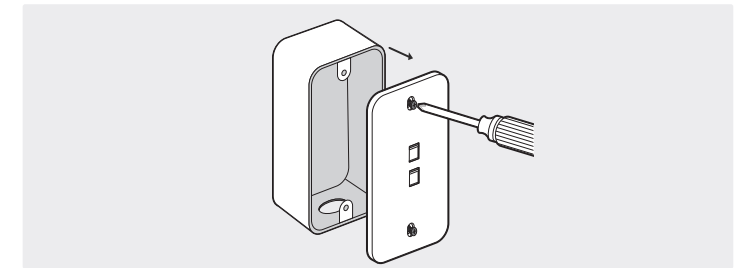
The AP can be mounted into a wall junction box. The junction box should be pre-installed with a running-in-wall Ethernet cable connected to a PoE switch.

Common wall junction boxes:

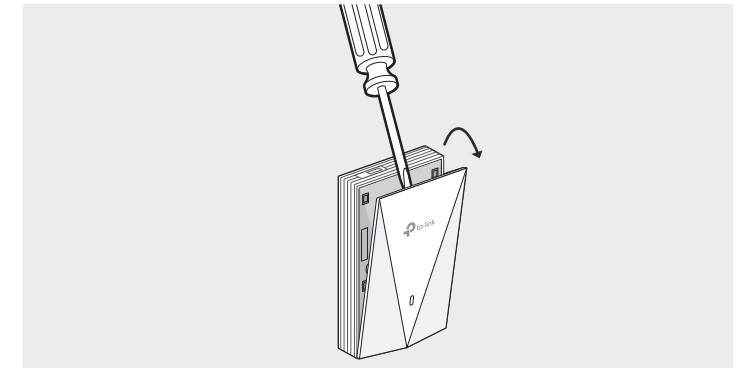


Note: AP7650 is used as an example throughout the installation.

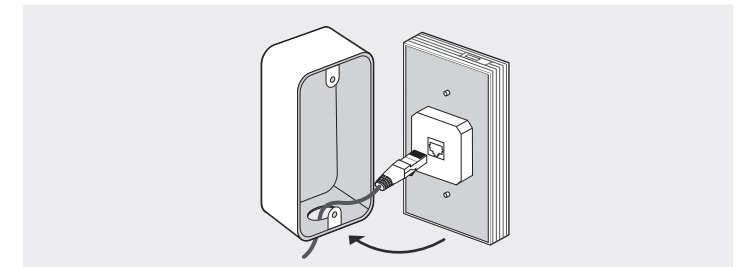
1. Detach the faceplate of the junction box with a Phillips screwdriver (demonstrated with a standard US wall junction box).



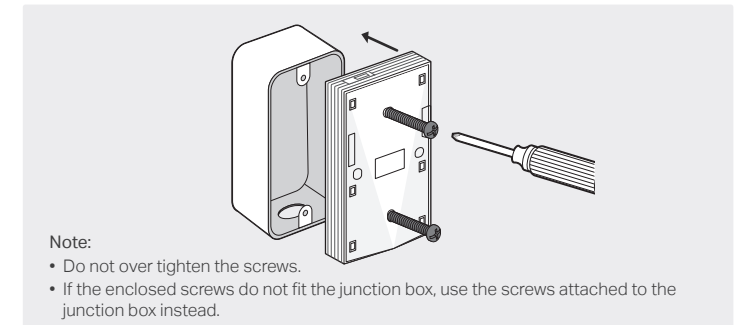
2. Detach the faceplate of the AP with a screwdriver.



3. Connect the Ethernet cable inside the junction box to an RJ45 plug. Then connect the cable to the ETH0 (PoE IN) port. Position the Ethernet cable to ensure it is not strained.



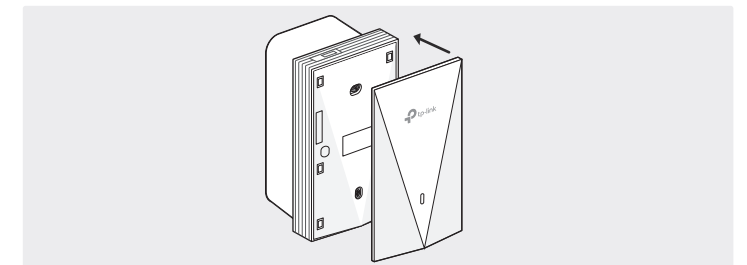
4. Insert the enclosed screws and tighten them with a Phillips screwdriver to secure the mounting bracket.



Note:

- Do not over tighten the screws.
- If the enclosed screws do not fit the junction box, use the screws attached to the junction box instead.

5. Press the faceplate of the AP back into position.



3 Software Configuration

Choose from the following methods to set up your APs:

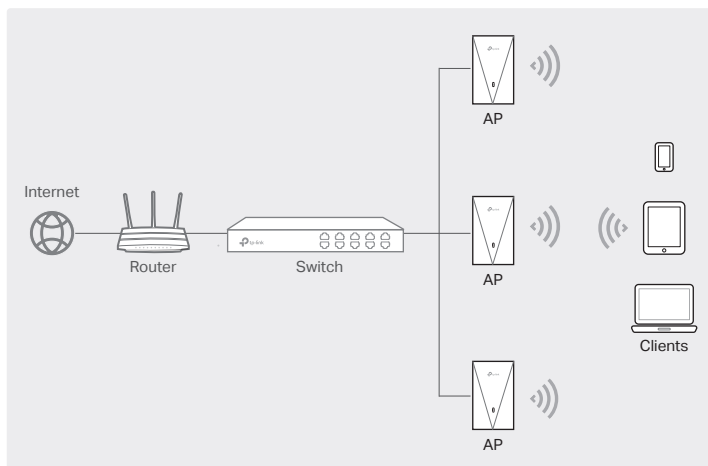
- Method 1: Standalone Mode**

To configure and manage APs separately (Convenient for a small network with only a few devices)

- Method 2: Controller Mode**

To configure and manage APs in batches on a central platform, namely the controller

Method 1: Standalone Mode



Note:

- Before you start, be sure to **power up** and **connect** your devices according to the topology figure.
- A **DHCP server** (typically a router with DHCP function enabled) is required to assign IP addresses to the APs and clients in your local network.

Via Omada App

1. Download and install the TP-Link Omada app from App Store or Google Play.



2. Connect your mobile device to the AP by using the default SSIDs printed on the label at the bottom of the product.

3. Open the Omada app, go to the **Standalone Devices > APs** page, and wait for the AP to appear. Tap on the AP to configure it.

The Omada app is designed to help you quickly configure common settings. If you want to configure advanced settings, use the web page of your AP or use Controller Mode.

Via Web Browser

1. Connect your device to the AP by using the default SSIDs printed on the label at the bottom of the product.
2. Launch a web browser and enter **http://tplinkeap.net** in the address bar. Use **admin** for both Username and Password to log in.
3. Set up a new Username and Password for secure management purpose. Then you can configure the AP.

To configure other APs, connect your device to each AP by using the corresponding default SSIDs and repeat the steps above. You can configure some basic functions in Standalone Mode. If you want to configure advanced functions, use Controller Mode.

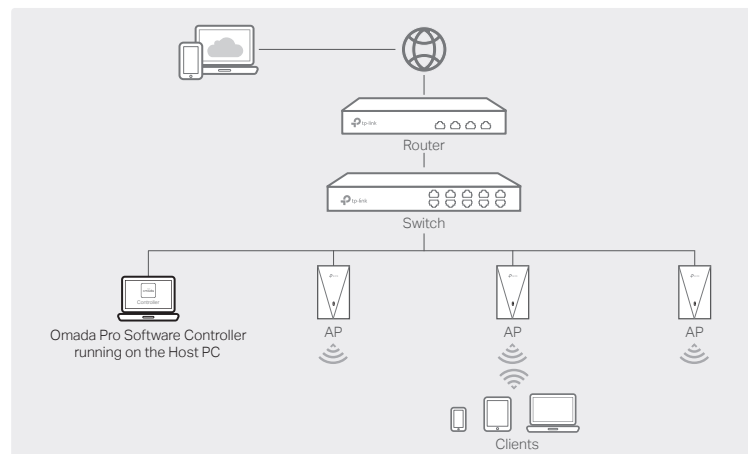
Method 2: Controller Mode

Choose a type of controller:

- Type 1: Omada Pro Software Controller**

If you want to use the software controller, get a PC with Windows or Linux OS, contact the sales staff to get the installation package of Omada Pro Software Controller, then install and launch it.

To manage your devices, the software controller needs to keep running on your computer. Licenses need to be purchased additionally.



Note:

- Before you start, be sure to **power up** and **connect** your devices according to the topology figure.
- A **DHCP server** (typically a router with DHCP function enabled) is required to assign IP addresses to the APs and clients in your local network.
- The controller must have network access to your devices (the router, switch, and APs) in order to find, adopt, and manage them.

Via Omada App

1. Download and install the TP-Link Omada app from App Store or Google Play.



2. Launch your Omada app and configure the controller at a local or remote site.

- Local Management**

- a. Connect your mobile device to the AP by using the default SSIDs printed on the label at the bottom of the product.
- b. Launch the Omada app and go to **Local Access**, tap the **+** button on the upper-right corner to add the controller. Then you can launch the controller to adopt and manage devices.

- Remote Management**

- Note:** Before you start, make sure that both your controller and mobile device can access the internet.
- a. Make sure that **Cloud Access** is enabled on your controller and your controller has been bound with your TP-Link ID.
 - b. Launch the Omada app and log in with your TP-Link ID. Then go to **Cloud Access**. A list of controllers that have been bound with your TP-Link ID will appear. Then you can launch the controller to adopt and manage devices.

Via Web Browser

- Local Management**

- a. Launch the software controller on your PC. After the initiation process, the controller automatically opens its web page. If not, click **Launch a Browser to Manage the Network**.
- b. On the controller's web page, follow the wizard to complete the quick setup. Then you can launch the controller to adopt and manage devices.

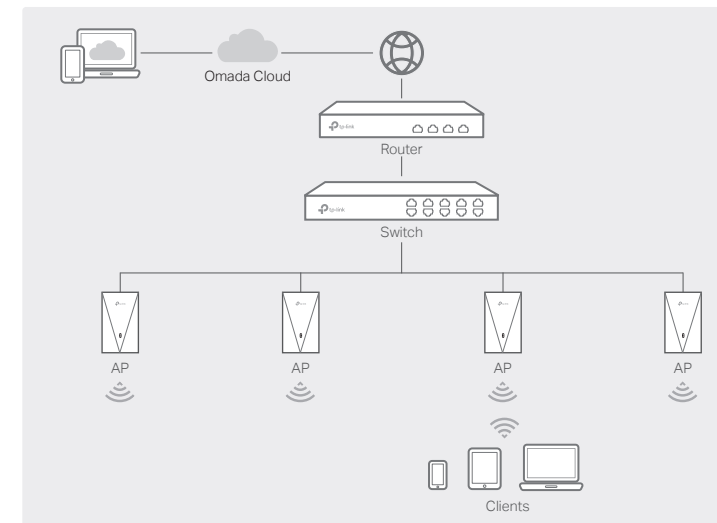
- Remote Management**

- Note:** Before you start, make sure that both your controller and PC can access the internet.
- a. Make sure that **Cloud Access** is enabled on your controller and your controller has been bound with your TP-Link ID.
 - b. Launch a web browser and enter **https://omada.tplinkcloud.com** in the address bar. Log in with your TP-Link ID. A list of controllers that have been bound with your TP-Link ID will appear. Then you can launch the controller to adopt and manage devices.

- Type 2: Omada Pro Cloud-Based Controller**

Omada Pro Cloud-Based Controller is a good alternative without the need to install the software controller on a PC.

Licenses need to be purchased additionally.



Note:

- Before you start, be sure to **power up** and **connect** your devices according to the topology figure.
- A **DHCP server** (typically a router with DHCP function enabled) is required to assign IP addresses to the APs and clients in your local network.

Web Configuration

1. Contact the sales staff to grant the Omada Pro Cloud-Based Controller permission.
2. Launch a web browser and enter **https://omada.tplinkcloud.com** in the address bar. Log in with your TP-Link ID.
3. Click **+ Add Controller** and choose **Cloud-Based Controller** to add a Omada Pro controller. Then you can launch the controller to adopt and manage devices.

* Management via Omada App

After adding a controller, you can also use it via the Omada app.

1. Download and install the TP-Link Omada app from App Store or Google Play.



2. Launch the Omada app and log in with your TP-Link ID. Then go to **Cloud Access**. A list of controllers that have been bound with your TP-Link ID will appear. Then you can launch the controller to adopt and manage devices.

For the detailed configurations, refer to the User Guide of the controller and APs. The guides can be found on the download center of our official website: <https://www.tp-link.com/support/download/>.

To ask questions, find answers, and communicate with TP-Link users or engineers, please visit <https://community.tp-link.com> to join TP-Link Community.

For technical support, the user guide and other information, please visit <https://www.tp-link.com/support>, or simply scan the QR code.



Safety Information

- Keep the device away from water, fire, humidity or hot environments.
- Do not attempt to disassemble, repair, or modify the device. If you need service, please contact us.
- Do not use the device where wireless devices are not allowed.

