

DELLTechnologies

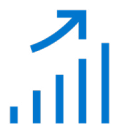
DELL DOCK – WD19S 130W

Power your productivity.



FAST CHARGING

Boost your PC's power with ExpressCharge on this powerful USB-C® dock.



ENHANCED PRODUCTIVITY

Do your best work faster with a dock that offers the ability to connect to monitors and peripherals all with a single connection to the PC.



FUTURE-READY DESIGN

Evolve as your needs change with the World's first modular dock with upgradeable power and connectivity.¹



INTELLIGENT MANAGEMENT

Work without disruptions utilizing a single firmware on our most manageable docks ever.

Work at full speed.

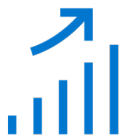
Power your productivity.

Dell Commercial Docks boost productivity for end users by making it easy to connect to and charge their PCs faster than any other dock available². Our docks offer the greatest compatibility across Dell Commercial laptops and are easy to deploy, manage and upgrade so IT staff can have added peace of mind. The WD19S docks are also compatible with notebooks from other manufacturers such as HP and Lenovo which support industry standards for USB-C docking³. For functional limitations with notebooks from other manufacturers in comparison to Dell Commercial notebooks, please see [this support article](#)



FASTEST CHARGING

Increase your power delivery and charge quicker with a dock that delivers up to 90 Watts of power allowing for an 80% charge in one hour with Dell ExpressCharge⁴. Get more done even faster, with Dell ExpressCharge Boost, a feature that provides up to a 35% charge in just 20 minutes⁵ on compatible systems.



ENHANCED PRODUCTIVITY

Enhance your productivity with the World's most powerful USB-C dock. USB-C technology delivers data transfer speeds of up to 10Gbps and supports up to three QHD displays so you can work more efficiently.



INTELLIGENT MANAGEMENT

Streamline the deployment and management of all of the docks in the family, regardless of their connectivity with a single firmware. Dell's docks are support enabled in our laptops' BIOS from the factory. Perform firmware updates in minutes without needing to reboot the system, allowing end users to continue working without disruption.



SUPPORT

Dell Commercial Docks come with a standard, 3 Year Limited Hardware Warranty with Advanced Exchange⁶. If the customer has an issue that cannot be resolved over the phone, Dell will send a replacement dock out next business day. Dell offers the option for customers to extend this warranty up to 4 or 5 years for an additional fee.

Recommended Accessories

DELL DOCK – WD19S 130W



DELL PREMIER MULTI-DEVICE WIRELESS KEYBOARD AND MOUSE – KM7321W

Multi-task seamlessly across 3 devices with this premium full-sized keyboard and sculpted mouse combo with programmable shortcuts and 36 months battery life.⁷



DELL ULTRASHARP 27 4K USB-C MONITOR – U2720Q

Experience true color and striking clarity on this 27" 4K monitor with a wide color coverage. This VESA DisplayHDR™ 400 monitor features virtually borderless InfinityEdge and USB-C connectivity with up to 90W power delivery.



DELL DOCKING STATION MOUNTING KIT – MK15

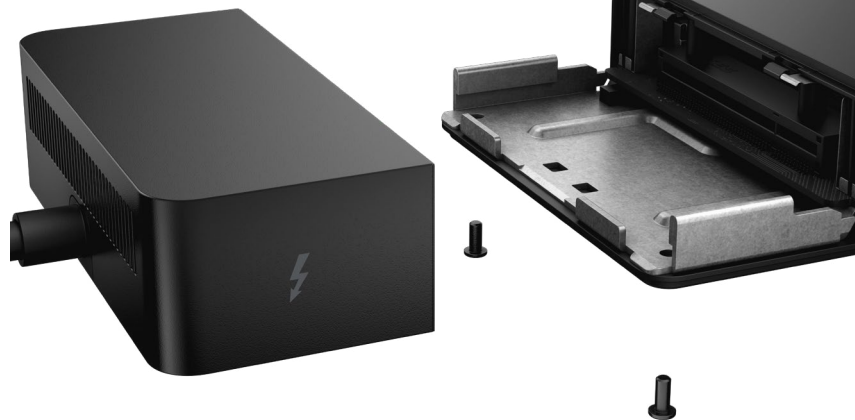
Mount your Dell Commercial Dock behind your compatible monitor or under your desk to create a clutter-free work environment.

Future-ready design

Dell offers the World's first modular dock with upgradeable connectivity and power. By allowing you to easily upgrade your connectivity and boost your power delivery to meet the future needs of your evolving PC environment, you can significantly reduce your upgrade costs.

DELL THUNDERBOLT™ DOCK WD22TB4 MODULE

Need more power in the future? Upgrade to the WD22TB4 module for Thunderbolt connectivity with up to 130 Watts of power delivery, 40Gbps data transfer speeds and support for up to four 4K displays at a fraction of the cost of replacing the entire dock.



Features & Technical Specifications

DELL DOCK – WD19S 130W

Feature	Technical Specifications
Product Type	Docking Station
Display Support	<u>For a HBR2* PC</u> 2 x FHD @ 60Hz 1 x QHD @ 60Hz 1 x 4K @ 30Hz <u>For a HBR3 PC</u> 3 x FHD @ 60Hz 2 x QHD @ 60Hz 1 x 4K @ 60Hz <u>For HBR3 PC supporting Display Stream Compression</u> 3 x QHD @ 60Hz 2 x 4K @ 60Hz
Max Resolution	4K @ 60Hz
Video interfaces	2 x Full size DP1.4 1 x HDMI 1 x MFPD USB-C
USB Ports	3 x USB-A 3.2 Gen 1 2 x USB-C 3.2 Gen 2
Networking	Gigabit Ethernet
Security Slot Type (cable lock sold separately)	1 x Kensington lock slot 1 x Noble Wedge lock slot
LED Indicators	Power Adapter LED Power Button LED RJ45 LEDs
Power	Power Adapter 130 Watt AC with up to 90 Watts power delivery Up to 90 Watts power delivery to non-Dell systems
Dimensions	205mm x 90mm x 29mm 8.07in x 3.54in x 1.14in
Dock Weight (without power adapter)	585g 1.29lbs

Feature	Technical Specifications
Operating Systems	Microsoft Windows 10 Microsoft Windows 11 Ubuntu 18.04 Red Hat Enterprise Linux
Systems Management	Wireless vPro supported by Notebook or Workstation
Docking Interface	USB-C
Cable Length	1.0m
MAC Address	Pass Through MAC Address
Warranty	3-Year Limited Hardware Warranty with Advanced Exchange Additional 4- & 5-year warranty optional
Management Features	PXE Boot Wake-On-LAN MAC address pass-through Port Disablement Wake-On-Dock button Wake-On-Dock Dell Command Update (DCU) Error messages and dock event notifications
What's in the Box	1 x WD19S Dock with USB-C Cable attached 1 x 130W Power Adapter





DELL DOCK – WD19S 130W

Power your productivity.

* HBR (High Bit Rate) is a DisplayPort standard which determines the bandwidth available for displays. Please refer to your notebook's specifications to identify the HBR version.

1 Based on Dell internal analysis, February 2019.

2 Based on Dell internal analysis of competitive products using publicly available data as of February 2019. Power Delivery of up to 130W when used with compatible Dell systems. ExpressCharge Boost is available on select Dell systems.

3 Dell USB-C and Thunderbolt™ Docks support notebooks that have implemented USB-C or Thunderbolt™ industry specifications.

For USB-C functionality, non-Dell notebooks must support USB Power Delivery 2.0 (or greater) for power delivery of up to 90W, USB 3.2 (or greater) for up to 10Gbps of data transfer and DisplayPort™ Alt mode for video output.

For Thunderbolt™ functionality, non-Dell notebooks must support USB Power Delivery 2.0 (or greater) for power delivery of up to 90W and Thunderbolt™ 3 (or greater) for up to 40Gbps of video and data transfer.

Power button to turn on system, MAC Address Pass-Through, Wake-on Dock and Wake-on LAN features only function on Dell Commercial Windows notebooks. Firmware Update Utility functions with Windows OS systems. Multi-Stream Transport for monitors (Extended Desktops) is not supported on Apple PCs, Dell USB-C Docks will only display in cloned mode. Visit the support page of your non-Dell notebook to determine compatibility.

4 Within Dell Power Manager software, selecting ExpressCharge™ can recharge system battery from 0% up to 80% within 60 minutes. After charging has reached 80% capacity, charging speed will return to normal speed. Recommended for use with the provided Dell power adapter; not recommended with a smaller capacity power adapter. Charging time may vary +/-10% due to system tolerance.

5 Within Dell Power Manager software, selecting either the Default mode of Adaptive Charge or ExpressCharge™ can recharge system battery from 0% up to 35% within 20 minutes when system is powered-off and battery temperature is between 16-45 degrees Celsius. With ExpressCharge™ mode enabled, the system battery can then continue charging up to 80% within 60 minutes. After charging has reached 80% capacity, charging speed will return to normal speed. Recommended for use with the provided Dell power adapter; not recommended with a smaller capacity power adapter. Charging time may vary +/-10% due to system tolerance.

6 Advanced Exchange Service replacement dock ships, if needed, after phone/online diagnosis. Fee charged for failure to return defective unit. See dell.com/servicecontracts.

7 Based on Dell analysis of battery life usage model calculations, Nov. 2020. Results vary depending on use, operating conditions and other factors.

Product availability varies by country. Please contact your Dell representative for more information.

© 2023 Dell Inc. or its subsidiaries. All Rights Reserved. Dell Technologies, Dell, EMC, Dell EMC and other trademarks are trademarks of Dell Inc. or its subsidiaries. Other trademarks may be trademarks of their respective owners. USB Type-C® and USB-C® are registered trademarks of USB Implementers Forum.

ID#G21000009

v4 8/2023