

# Outdoor ColorPro

## Outdoor ColorPro Night Vision Pan Tilt Network Camera

MODEL: VIGI C540S



**4MP | H.265+**

VIGI C540S



ColorPro  
Night Vision



Face  
Recognition\*



People & Vehicle  
Analytics\*



Human & Vehicle  
Classification



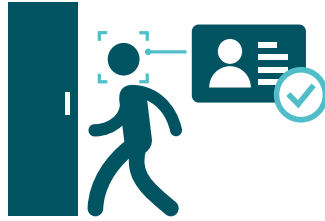
Smart Detection



Powerful Pan Tilt

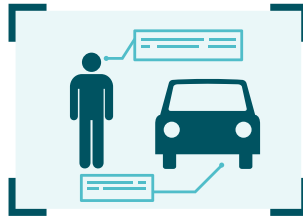
## // Face Recognition

Efficiently enhances access management and attendance control while better protecting privacy\*.



## // People & Vehicle Analytics

Quickly find people or vehicles of interest using various attributes, greatly improve your search efficiency\*.



## // Human & Vehicle Classification

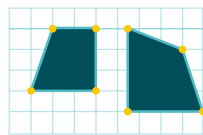
Intelligently distinguishes humans and vehicles from other objects, so you receive more accurate event notifications.



## // Smart Detection



Motion Detection



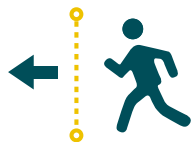
Region Intrusion  
Detection



Object Removal  
Detection



Region Exiting  
Detection



Line-Crossing  
Detection



Camera Tampering  
Detection



Object Abandoned  
Detection



Region Entering  
Detection

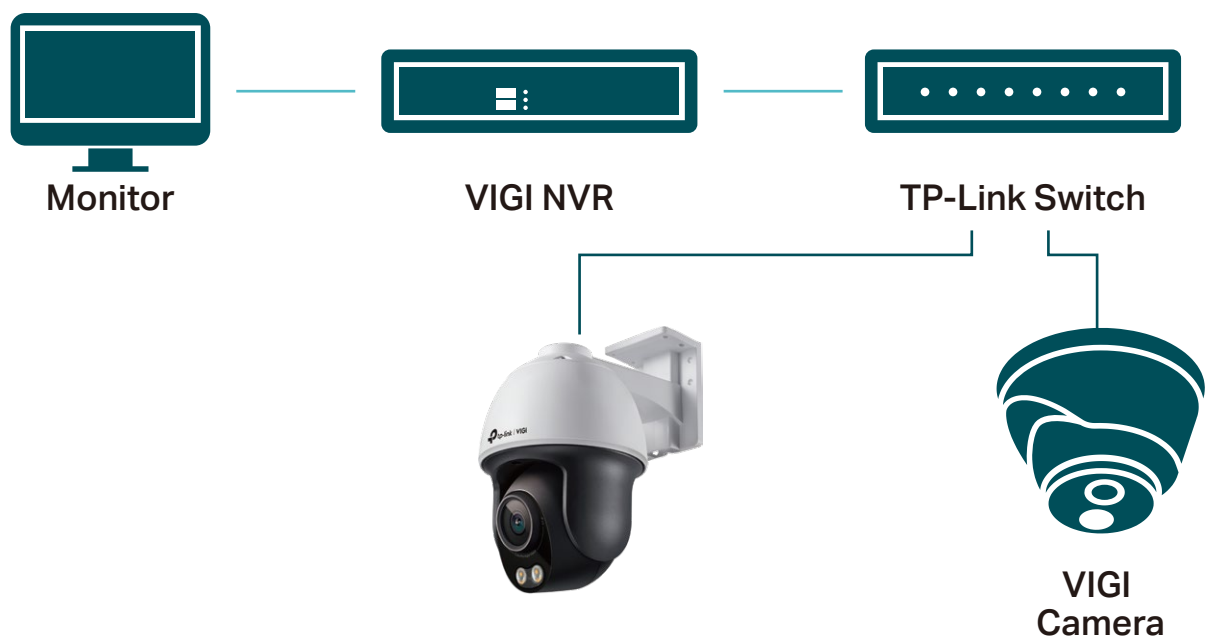
## // Flexible Pan Tilt

- Customized Patrol
- Power-Off Memory Function
- Auto Tracking
- Remote Monitoring & Configuration

## // VIGI Surveillance Solution

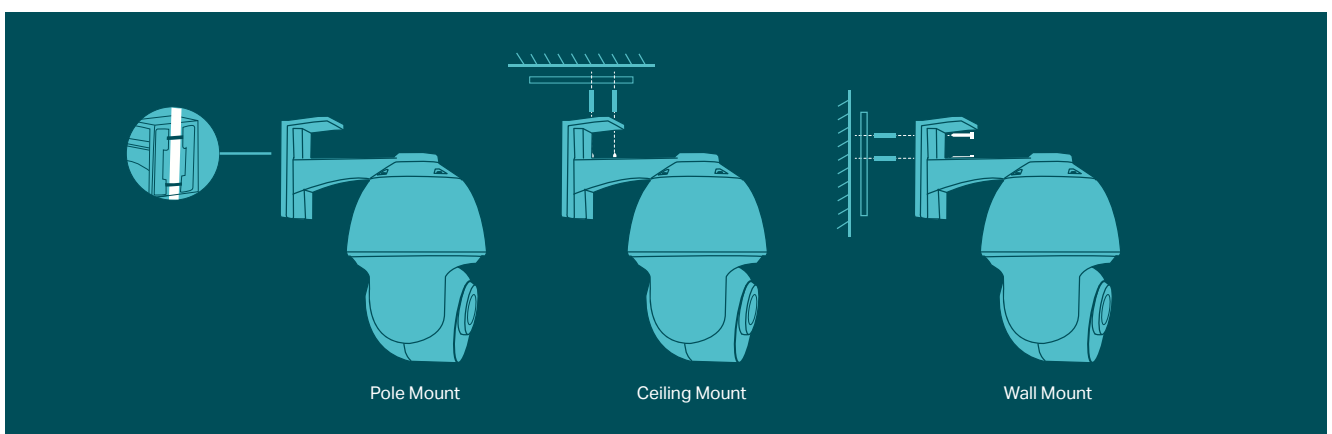
The VIGI professional surveillance system by TP-Link is dedicated to protecting the business that you've worked hard to build—whenever, wherever.

Outstanding functions, reliable quality guarantees, and simplified installation work together to ensure your business stays safe and sound.



## // Flexible Installation

Find the perfect vantage point by simply securing your camera to the ceiling, wall, or pole\*\*.



# // Specifications

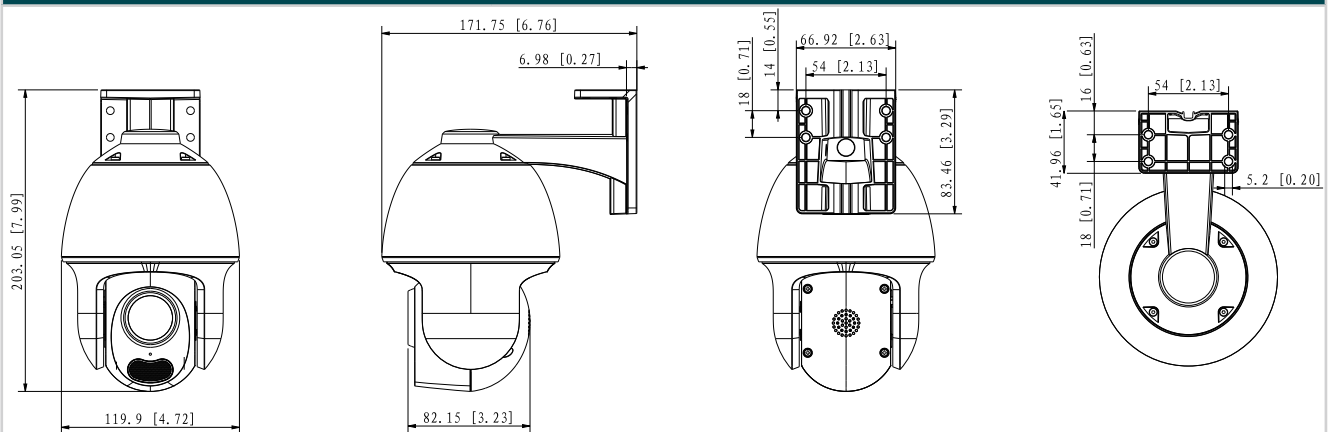
Camera	
Product Model	VIGI C540S
Image Sensor	1/1.79" Progressive Scan CMOS
Min. Illumination	0.0005 Lux; 0 Lux with white light
Shutter Speed	1/3 to 1/10000 s
Slow Shutter	Yes
Day & Night Mechanism	N/A
Day/Night Switch	Unified/Scheduled/Auto
Lens	
Focal Length	4 mm
Aperture	F1.0±5%
FOV	Diagonal FOV: 127°, Horizontal FOV:104°, Vertical FOV: 55°
Lens Mount	M16*P 0.5
DORI Distance	4 mm: Detect: 63 m (207 ft) Observe: 26 m (86 ft) Recognize: 13m (41 ft) Identify: 6 m (21 ft)
Angle Adjustment (Manual)	
Range	Pan: 0° to 348°, Tilt: 0° to 105°
PTZ	
Pan/Tilt Range	Pan: 0° to 348°, Tilt: 0° to 105°
Pan/Tilt Speed	Pan Speed: Configurable from 8° to 44°/s; Preset Speed: 44°/s Tilt Speed: Configurable from 8° to 44°/s; Preset Speed: 44°/s
Manual Control Speed	Configurable from 8° to 35°/s
Presets	300
Patrol Scan	8 patrols, up to 8 presets for each patrol
Power-off Memory	Yes; Auto restore to previous PTZ and lens status after power failure
Park Action	Yes; Preset; Patrol Scan
3D Positioning	Yes
Illuminator	
IR LED	N/A
White LED	Quantity: 2 Range: 30m
Illuminator On/Off Control	Auto/Scheduled/Always on/Always off

Video	
Max. Resolution	2688x1520
Main Stream	Frame Rate 50Hz: 1fps, 5fps, 10fps, 15fps, 20fps, 25fps 60Hz: 1fps, 5fps, 10fps, 15fps, 20fps, 25fps, 30fps  Resolution: 2688x1520, 2560x1440, 2304x1296, 2048x1280, 1920x1080, 1280x720
Sub-Stream	Frame Rate 50Hz: 1fps, 5fps, 10fps, 15fps, 20fps, 25fps 60Hz: 1fps, 5fps, 10fps, 15fps, 20fps, 25fps, 30fps  Resolution: 704x576, 640x480, 352x288, 320x240.
Bit Rate Control	CBR, VBR
Video Compression	Main stream: H.265/H.265+/H.264/H.264+ Sub-stream: H.265/H.264
Video Bit Rate	Main Stream: 256 Kbps to 6 Mbps Sub-Stream: 64 Kbps to 512 Kbps
Image	
Image Settings	Mirror, brightness, contrast, saturation, sharpness, exposure, WDR, white balance, HLC adjustable by client software
Day/Night Switch	Unified, Scheduled, Auto
Image Enhancement	BLC, HLC, 3D DNR
Wide Dynamic Range (WDR)	120dB Note: When Face Recognition s is enabled, only DWDR is supported.
SNR	≥ 52 dB
Image Parameters Switch	Yes
Privacy Mask	Up to 4 Masks
ROI	1 Region
OSD Setting	Yes
Audio	
Audio Communication	Two-way audio
Audio Input	Yes
Audio Output	Yes
Audio Compression	Yes
Audio Sampling Rate	8KHz
Environment Noise Filtering	Yes
Audio Bit Rate	64 Kbps(G.711 alaw)
Network	
Protocols	TCP/IP, UDP, ICMP, HTTP, HTTPS, DHCP, DNS, RTSP, NTP, UPnP, UDP, SSL/TLS

API	Open Network Video Interface (Profile S)
Web Browser	Google Chrome® 57 and above Firefox® 52 and above Safari® 11 and above Microsoft® Edge 91 and above
Security	Password Protection, HTTPS Encryption, IP Address Filter, Digest Authentication
Simultaneous Live View	3 Main Streams & 3 Sub-Streams
Client	VIGI App, VIGI Security Manager, VIGI NVR, Web
Cloud	Yes
ONVIF	Yes
<b>Interface</b>	
Network Interface	1 RJ45 10/100M Self-Adaptive Ethernet Port, PoE
On-board Storage	Built-In Memory Card Slot, Support MicroSD Card, Up to 256 GB
Built-in Speaker	Yes
Built-in Microphone	Yes; Records Anything Going on within a 15-ft Radius of the Camera
Audio	N/A
Alarm	N/A
Reset Button	Yes
Power	DC Power Port
<b>Alarm and Event Management</b>	
Smart Event	Human & Vehicle Classification, Intrusion Detection, Line-Crossing Detection, People Detection, Vehicle Detection, Region Entering Detection, Region Exiting Detection, Abandoned Object Detection, Object Removal Detection, Loitering Detection, Scene Change Detection, Smart Frame
Basic Event	Motion detection, Camera Tampering, Scene Change Detection, Exception(illegal login)
Alarm Linkage	Memory Card Video Recording, Message Push, White Light Flashing, Sound Alarm
Linkage Method	N/A
Output Notification	Message Push
<b>Deep Learning Function</b>	
Multi-Target-Type Detection	Supports Simultaneous Detection and Capture of Human Body and Vehicle
Face Capture	Yes
Face Comparison	Yes
<b>General</b>	
Operating Temperature	-30–60 °C
Storage Temperature	-40–60 °C
Operating Humidity	95% or Less (Non-condensing)

Storage Humidity	95% or Less (Non-condensing)
Power Supply	12V DC±5%, Max. 13.13W, 5.5mm Coaxial Power Plug PoE: 802.3at, class 4, Max. 16.47 W
Material	Plastic
Protection	IP66
Product Dimensions (L x W x H)	120*172*203mm
Package Contents	VIGI Network Camera Quick Start Guide Waterproof Cable Attachments Mounting Accessories
Net Weight	0.59 Kg
Gross Weight	0.94 Kg
Certifications	CE, NTRA, VCCI, KC, BSMI, FCC, IC

## Dimensions



Unit: mm

\*Some features are in development and will update with future software iterations.

\*\*Pole mounting kits and SD card are not included in the package.

Specifications are subject to change without notice and can be found at [www.tp-link.com](http://www.tp-link.com).

©2023 TP-Link