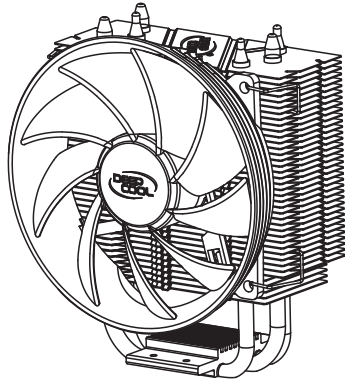




# INSTALLATION GUIDE

## 安装说明书

This installation guide is applicable for GAMMAXX 300 series.  
此说明书适用于九州风神玄冰300系列产品。



GAMMAXX 300  
玄冰300

PRODUCT SCHEMATIC DRAWING  
产品示意图

### CAUTION:

1. All specifications and pictures in this installation guide are for reference only. Please refer to your product for actuality.
2. Under no condition shall Deepcool be liable for any indirect, incidental or consequential damages arising from any defect or error in this manual or product.
3. Please ask for professional help if you are not sure of safe installation.
4. Installation manual in other languages is available on our website: www.deepcoolglobal.com.

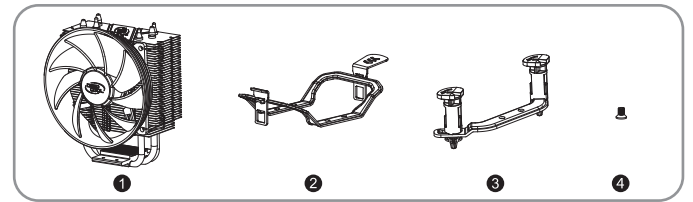
Appearance Patent NO. : 201130500463.1  
Brands and designs are trademarks from Beijing Deepcool Industries Co., Ltd.  
All rights reserved.  
Beijing Deepcool Industries Co., Ltd.  
MADE IN CHINA

### 警告声明:

1. 本公司有权在未事先通知的情况下对本说明书进行修改, 以便改进产品的稳定性、设计及功能。
2. 本说明书之描述内容不代表本公司之承诺, 对于任何因安装或使用不当而造成直接、间接、有意、无意的损坏及隐患, 本公司概不负责。
3. 在无法掌握操作方法前需请求专业人士帮助, 严禁在未掌握操作要领的前提下使用本产品。
4. 若需对本公司产品了解更多信息, 请浏览我们的网页: www.deepcoolglobal.com

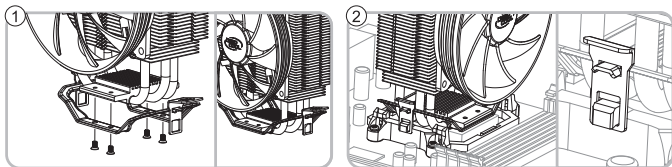
产品外观专利: 201130500463.1  
九州风神公司2012版权所有。  
手册中提及的其他商标及商号是指拥有该商标及名称的机构或其产品。  
出品: 北京市九州风神科贸有限责任公司  
地址: 北京市海淀区上地信息路2号2号楼12层  
中国制造

### COMPONENTS LIST 零部件说明



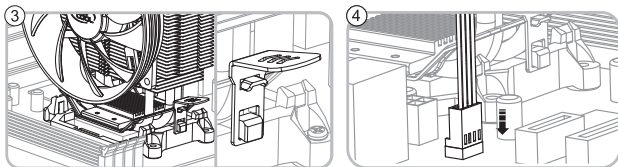
①	Heatsink	散热器主体	1pc
②	AMD Metal Clip	AMD扣具	1pc
③	Intel Push-pin Clip	INTEL扣具	2pcs
④	Screw	螺丝	4pcs

### AMD FM1/AM3+/AM3/AM2+/AM2/940/939/754 Installation 安装步骤



Attach the AMD metal clips onto heatsink base using the screws.  
Caution: Please keep away from touching the thermal grease on the base.  
用螺丝将AMD扣具固定在散热器主体上。  
注: 请避免触碰散热器主体底部的导热膏。

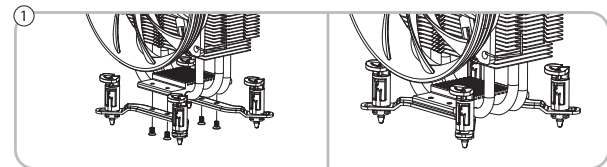
As illustrated, put the heatsink onto the processor and hook the vertical clip onto the retention frame tab.  
将散热器放在CPU上, 然后按图示方法, 用扣具直扣端勾住AMD塑胶架的一端。



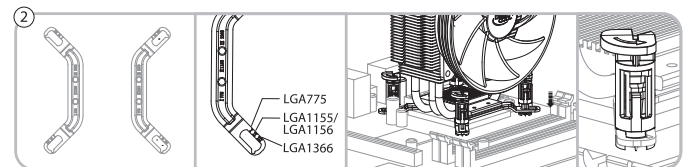
Press down the other side clip and hook it onto the tab, too. Please ensure perfect contact between the heatsink base and the CPU surface during installation.  
然后用扣具手柄端勾住AMD塑胶架的另一端, 检查并确认散热器底部与CPU表面完全接触。

Finish the installation by connecting the fan cable to the motherboard.  
将风扇插头插在主板相应位置, 确认无误后完成安装。

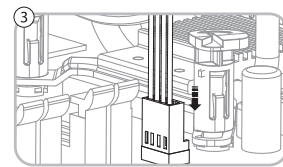
### INTEL LGA1366/LGA1155/LGA1156/LGA775 Installation 安装步骤



Attach Intel push-pin clips onto heatsink base using the screws.  
Caution: Please keep away from touching the thermal grease on the base.  
用螺丝将Intel扣具固定在散热器主体上。  
注: 请避免触碰散热器主体底部的导热膏。



Put the cooler on the processor, check your socket type and ensure all push-pins through the motherboard mounting holes. Position the clip as shown in the picture and then push down to secure the cooler.  
将散热器放在CPU上, 使扣具底部穿过主板相应的孔位, 如图, 将上扣旋转到图示位置后, 用力下压扣紧, 检验散热器底部与CPU表面完全接触, 无松动现象。



Finish the installation by connecting the fan cable to the motherboard.  
将风扇插头插在主板相应位置, 确认无误后完成安装。