



Set up with videos:

Scan QR code or visit

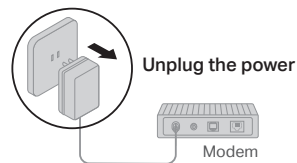
<https://www.tp-link.com/support/setup-video/#wi-fi-routers>



1 Connect the Hardware

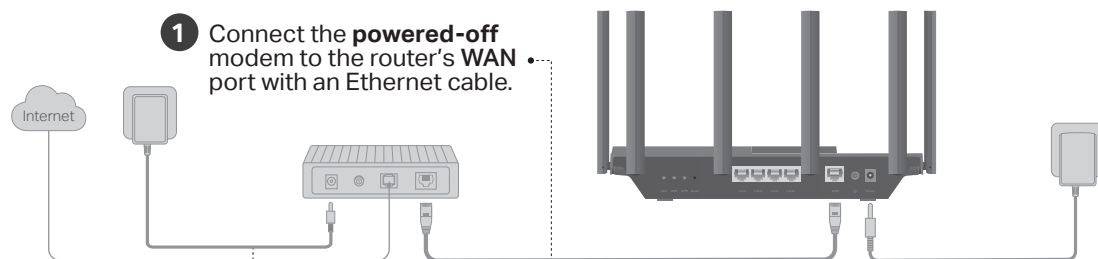


- **Unplug the power** to turn off your modem, if any, and remove the backup battery if it has one.
- Refer to **Q5 of Need Help?** to place the router for optimal Wi-Fi performance.



If your internet comes from an Ethernet outlet instead of a DSL / Cable / Satellite modem, connect the router's **WAN port** to it, then follow steps 3 and 4 to complete the hardware connection.

*Image may differ from actual product.



- 1 Connect the **powered-off** modem to the router's **WAN port** with an Ethernet cable.

- 2 Power on the modem, and then wait about **2 minutes** for it to restart.

- 4 Verify that the hardware connection is correct by checking the following LEDs.

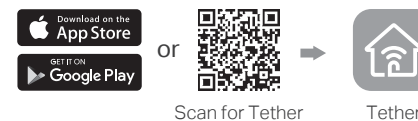


Note: If the 2.4 GHz, 5 GHz, and 6 GHz LEDs are off, press and hold the Wi-Fi button on the back for more than 2 seconds. These LEDs should turn solid on.

2 Set Up the Network

Method ONE: Via TP-Link Tether App

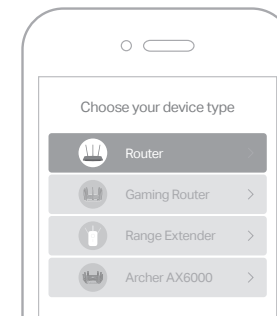
1. Download the Tether app.



2. Open the Tether app and log in with your **TP-Link ID**.

Note: If you don't have an account, create one first.

3. Tap the **+** button in the Tether app and select **Router > Wireless Router**. Follow the steps to complete the setup and connect to the internet.



😊 **Enjoy the internet !**

To enjoy a more complete service from TP-Link, bind your TP-Link ID to the router.

Method TWO: Via a Web Browser

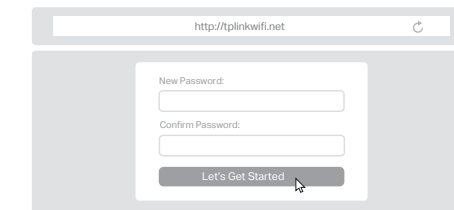
1. Connect your device to the router wirelessly or with an Ethernet cable.

The default wireless network names (SSIDs) and password are printed on the label at the bottom of the router.



2. Launch a web browser, and enter <http://tplinkwifi.net> or <http://192.168.0.1> in the address bar. Create a password to log in.

Note: If the login window does not appear, please refer to **Q1 of Need Help?** in this guide.



3. Follow the step-by-step instructions to set up the internet connection and register for the TP-Link Cloud service.

😊 **Enjoy the internet !**

TP-Link HomeShield

TP-Link HomeShield premium security services keep your home network safe with cutting-edge features for network. Download the Tether app to enjoy HomeShield features.

Network Protection

Detect cyber threats to keep your privacy and connected devices well protected.

Parental Controls

Manage online time and block inappropriate content to keep families healthy online.

Quality of Service (QoS)

Prioritize your bandwidth needs to get a better networking experience.

Comprehensive Reports

Gain full statistics and insights to help you know your home network better.

For more details, visit <https://www.tp-link.com/homeshield>.

Button Explanation

• LED Button

Press the button for 1 second to turn on or off the LEDs of your router.

• WPS Button

Press the button for 1 second, and immediately press the WPS button on your client to start the WPS process.

• Wi-Fi Button

Press and hold the button for more than 2 seconds, then release the button to turn on or off the wireless function of your router.

• Reset Button

Press and hold the button for about 6 seconds until the Power LED blinks to reset the router to its factory default settings.

To communicate with TP-Link users or engineers, visit <https://community.tp-link.com> to join TP-Link Community.

For technical support, replacement services, user guides, and other information, please visit <https://www.tp-link.com/support>.

If you have any suggestions or needs for our product guides, you are welcome to email techwriter@tp-link.com.cn.

- Keep the device away from water, fire, humidity or hot environments.
- Do not attempt to disassemble, repair, or modify the device. If you need service, please contact us.
- Do not use any other chargers than those recommended.
- Do not use damaged charger or USB cable to charge the device.
- Do not use the device where wireless devices are not allowed.
- Adapter shall be installed near the equipment and shall be easily accessible.

This device is restricted to indoor use only.

The operation of this device is prohibited on oil platforms, cars, trans, boats, and aircraft, except that operation of this device is permitted in large aircraft while flying above 10000 feet. Operation of transmitters in the 5.925-7.125 GHz band is prohibited for control of or communications with unmanned aircraft systems.

Need Help?



Q1. What should I do if I can't access the web management page?

- Reboot your router and try again.
- If the computer is set to a static IP, change its settings to obtain an IP address automatically.
- Verify that <http://tplinkwifi.net> is correctly entered in the web browser. Alternatively, enter <http://192.168.0.1> or <http://192.168.1.1> in the web browser.
- Use another web browser and try again.
- Disable and enable the network adapter in use.

Q2. What should I do if I can't access the internet?

- Power off your modem for about 5 minutes, then power it on and check the internet. If your modem has more than one Ethernet port, keep other ports unconnected.
- Check if the internet is working normally by connecting a computer directly to the modem via an Ethernet cable. If it is not, contact your internet service provider.
- Log in to the web management page, and go to the **Network Map** page to check whether the internet IP address is valid or not. If it's valid, go to **Advanced > Network > Internet**, click **Advanced Settings**, select **Use the Following DNS Addresses**, set the primary DNS to 8.8.8.8, and set the secondary DNS to 8.8.4.4. If it is not, check the hardware connection or contact your internet service provider.
- For cable modem users, log in to the web management page of the router and go to **Advanced > Network > Internet > MAC Clone**. Select **Clone Current Device MAC** and click **SAVE**. Then reboot both the modem and the router.

Q3. What should I do if I forget my wireless password?

- If you have not changed the default wireless password, it can be found on the label at the bottom of the router.
- Connect a computer directly to the router using an Ethernet cable. Log in to the router's web management page at <http://tplinkwifi.net>, and go to the **Wireless** page to retrieve or reset your wireless password.

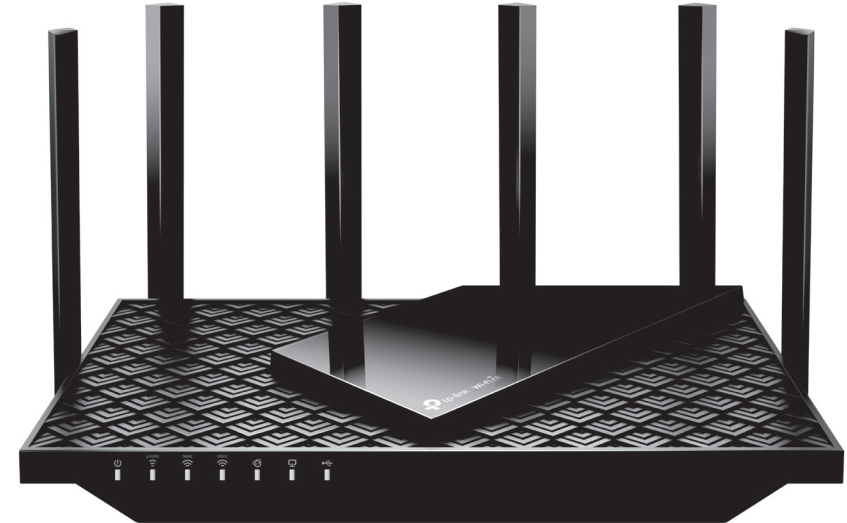
Q4. What should I do if I forget my web management page password?

- If you are using a TP-Link ID to log in, click **Forgot password** on the login page and then follow the instructions to reset it.
- Alternatively, press and hold the **Reset** button on the back for about 6 seconds until the Power LED blinks. Then visit <http://tplinkwifi.net> to create a new login password.

Q5. How should I position my router for optimal Wi-Fi performance?

- Don't place your router in a corner or in a closet.
- Avoid obstacles and high-powered appliances.
- Keep your router in a central location at a certain height.
- Keep the antennas upright when the router is placed on a desktop. Keep the antennas upright when the router is hanging on a wall.

Quick Installation Guide



Tri-Band Wi-Fi 6E Router

