



300Mbps Wi-Fi Router

Expand Wi-Fi Coverage



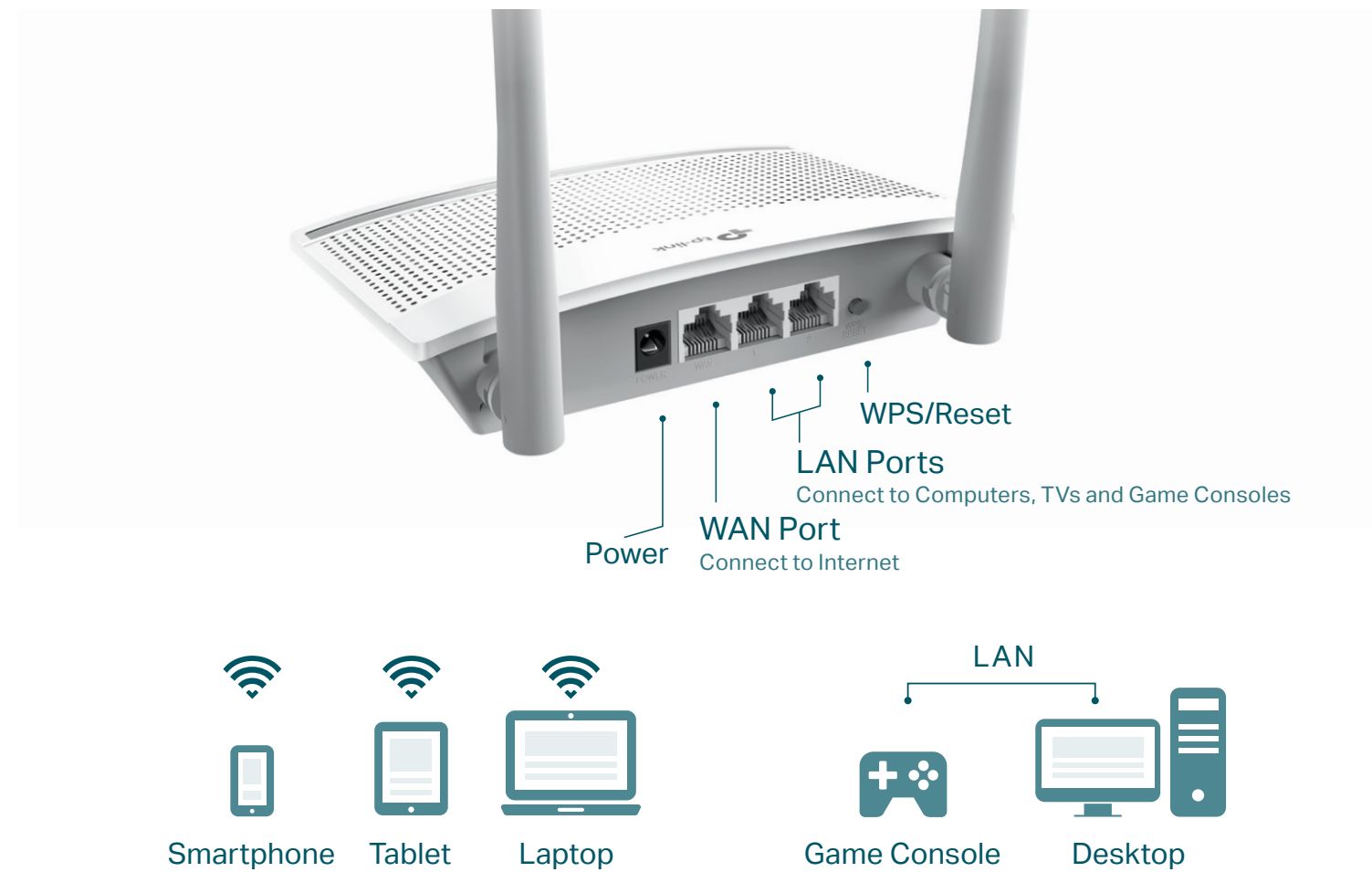
TL-WR820N

 300Mbps |  Easy Setup |  IPTV |  IPv6

Highlights

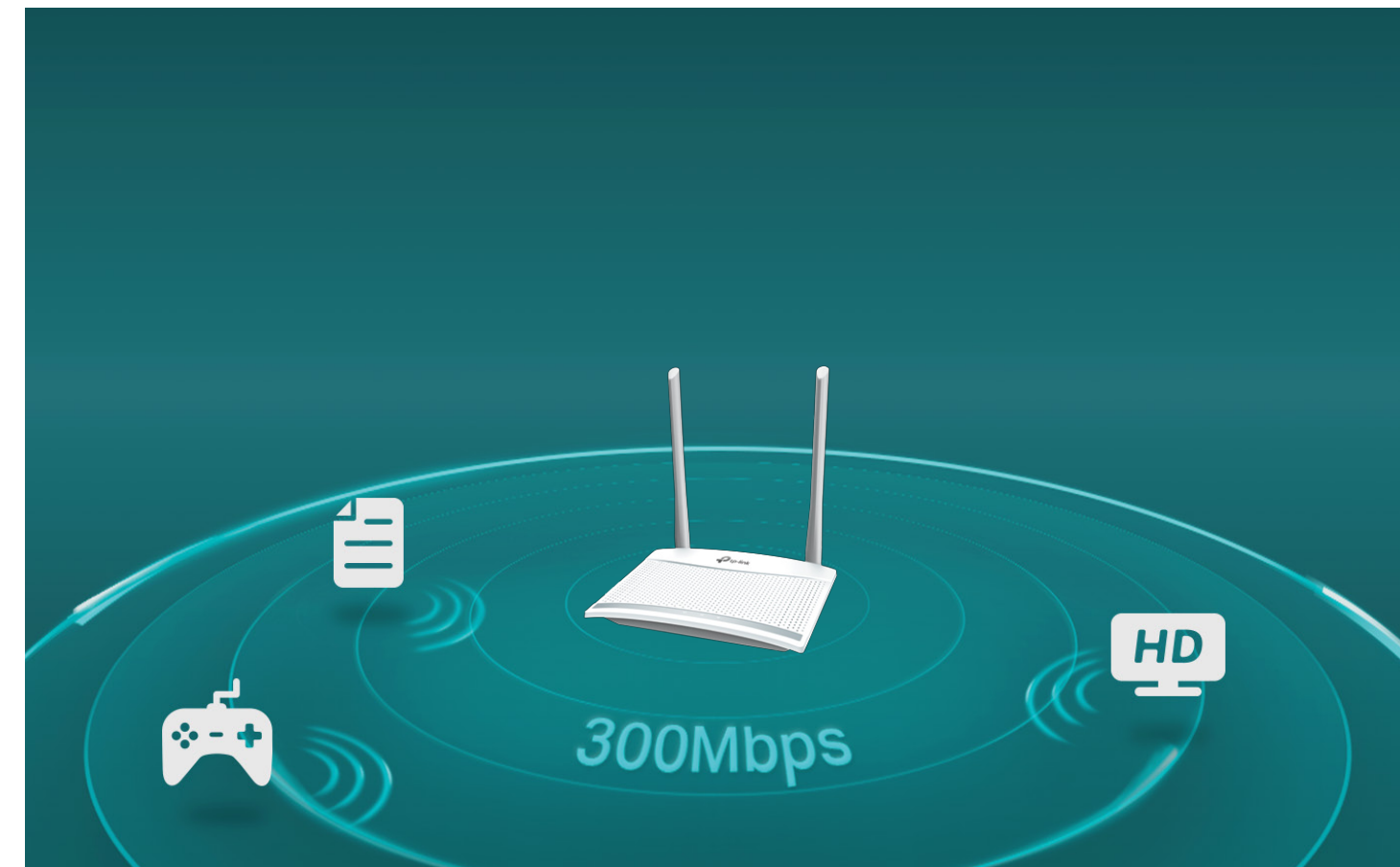
Reliable Network Connection

Equipped with two 5dBi antennas, TL-WR820N can enhance wireless signal transmission and reception. With 10/100Mbps Ethernet ports, it provides reliable Wi-Fi and wired connection for medium-sized homes, letting your family enjoy fast Wi-Fi together on every smartphone, tablet and laptop.



Quick, Everyday Wi-Fi

TL-WR820N is compatible with IEEE802.11b/g/n and provides a high speed solution. Complying with the IEEE802.11n standard, TL-WR820N can deliver a speed up to 300Mbps, meeting your most demanding home networking needs, such as HD streaming, online gaming and large files downloading.

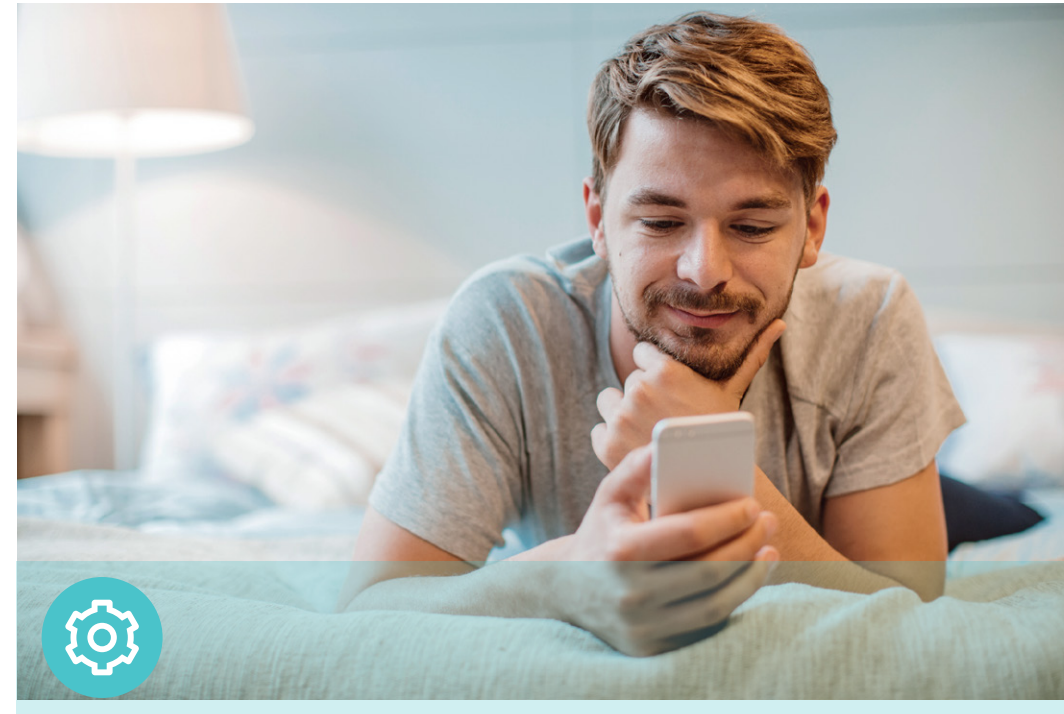


Features



Reliability

- **Wireless N Speed** – 300Mbps Wi-Fi speed meets your daily internet needs
- **802.11n** – Backward compatible with 802.11b/g products
- **Compatible with IPv6** – TL-WR820N allows you to enjoy IPv6 services provided by your ISP and visit IPv6 website



Ease of Use

- **Intuitive Web UI** – Ensures quick and simple installation without hassle
- **Fast Encryption** – One-touch wireless security encryption with the WPS button
- **Parental Controls** – Manage when and how connected devices can access the internet



Security

- **Guest Network** – Provides separate access for guests while securing the home network
- **Access Control** – Blocks unauthorized access to your network
- **SPI firewall** – Reliably safeguards your network against unknown hacking exploits, providing you a safe network environment

Specifications

Hardware

- Ethernet Ports: 2 10/100Mbps LAN Ports, 1 10/100Mbps WAN Port
- Buttons: WPS/Reset Button
- Antennas: 2 Fixed 5dBi Omni Directional Antennas
- External Power Supply: 5VDC / 0.6A
- Dimensions (W x D x H): 6.1 x 4.5 x 1.4 in. (154 x 114 x 36mm)



Wireless

- Wireless Standards: IEEE 802.11n, IEEE 802.11g, IEEE 802.11b
- Frequency: 2.412~2.472GHz
- Signal Rate:
 - 11n: Up to 300Mbps(dynamic)
 - 11g: Up to 54Mbps(dynamic)
 - 11b: Up to 11Mbps(dynamic)
- Reception Sensitivity:
 - 270M: -70dBm@10% PER
 - 130M: -72dBm@10% PER
 - 108M: -74dBm@10% PER
 - 54M: -75dBm@10% PER
 - 11M: -94dBm@8% PER
 - 6M: -95dBm@8% PER
 - 1M: -96dBm@8% PER
- Wireless Function: Enable/Disable Wireless Radio, WMM, Wireless Statistics
- Wireless Security: WEP, WPA / WPA2, WPA / WPA2-PSK

Specifications

Software

- Working Modes: Wireless Router
- WAN Type: Dynamic IP, Static IP, PPPoE, PPTP, L2TP
- DHCP: Server, DHCP Client List
- Quality of Service: WMM, Bandwidth Control
- Port Forwarding: Virtual Server, UPnP, DMZ
- Dynamic DNS: DynDns, NO-IP
- Access Control: Parental Controls, Local Management Control, Host list, Access Schedule, Rule Management
- Firewall Security: SPI Firewall, IP and MAC Address Binding
- Protocols: IPv4, IPv6
- Management: Access Control, Local Management, Remote Management
- Guest Network: 2.4GHz Guest Network

Others

- Certification
CE, RoHS
- System Requirements
Microsoft Windows 10/8.1/8/7/Vista/XP/2000/NT/98SE, MAC OS, NetWare, UNIX or Linux

Internet Explorer 11, Firefox 12.0, Chrome 20.0, Safari 4.0, or other Java-enabled browser

Cable or DSL Modem

Subscription with an internet service provider (for internet access)
- Environment
Operating Temperature: 0°C~40°C (32°F ~104°F)
Storage Temperature: -40°C~70°C (-40°F ~158°F)
Operating Humidity: 10%~90% non-condensing
Storage Humidity: 5%~90% non-condensing
- Package Contents
300Mbps Wi-Fi Router TL-WR820N

Power Adapter

RJ-45 Ethernet Cable

Quick Installation Guide



For more information, please visit

<http://www.tp-link.com/en/products/details/TL-WR820N.html>

or scan the QR code left

Specifications are subject to change without notice. TP-Link is a registered trademark of TP-Link Technologies Co., Ltd. Other brands and product names are trademarks or registered trademarks of their respective holders. Copyright ©2018 TP-Link Technologies Co., Ltd. All rights reserved.

Maximum wireless signal rates are the physical rates derived from IEEE Standard 802.11 specifications. Actual wireless data throughput and wireless coverage are not guaranteed and will vary as a result of 1) environmental factors, including building materials, physical objects, and obstacles, 2) network conditions, including local interference, volume and density of traffic, product location, network complexity, and network overhead, and 3) client limitations, including rated performance, location, connection, quality, and client condition.

www.tp-link.com

TP-Link 300Mbps Wi-Fi Router TL-WR820N