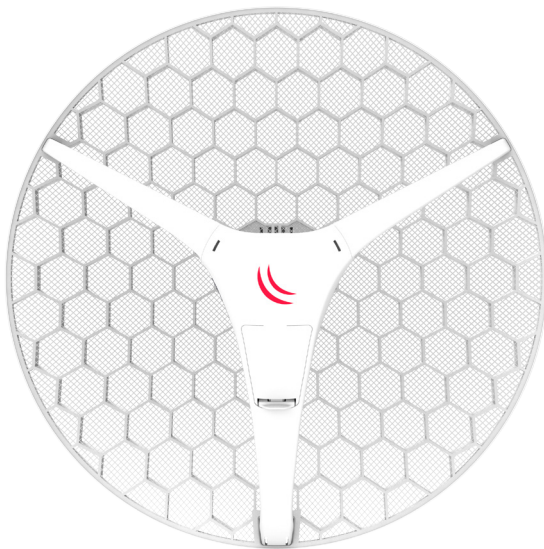


LHG series - now you can reach further!

We are adding two new models to our LHG product family, the LHG HP5 (high power) and LHG XL HP5 (extra large, high power). LHG HP5 comes with two times more output power than our regular LHG 5 - up to 630 mW, and is designed to reach up to 60% longer distances.



LHG XL HP5



LHG HP5

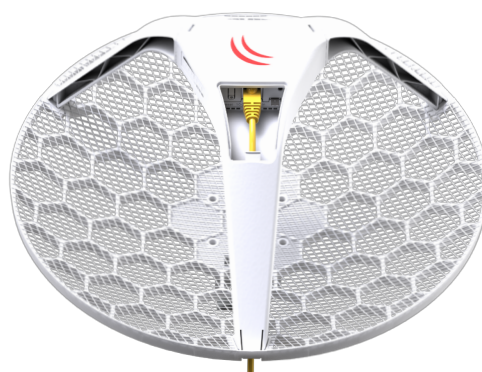


LHG 5

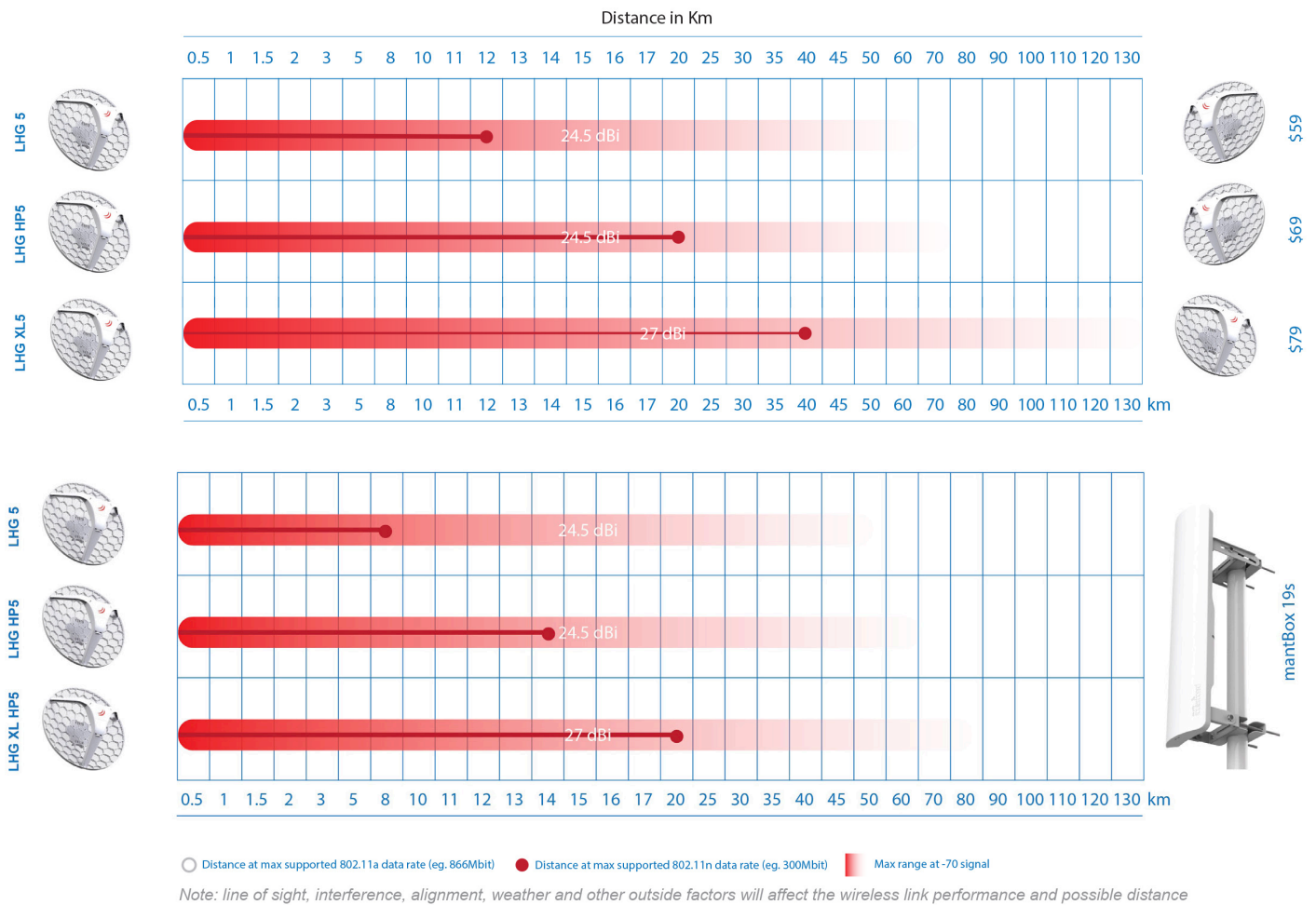
The LHG XL HP5 has a bigger 27 dBi, designed to reach up to 40 km in point-to-point setups at full speed, see the graphs for more information.

All units come with a PoE injector, power supply and pole mount, ready to be deployed.

| Model | Antenna gain | Price |
|------------|--------------|-------|
| LHG 5 | 24.5 dBi | \$59 |
| LHG HP5 | 24.5 dBi | \$69 |
| LHG XL HP5 | 27 dBi | \$79 |



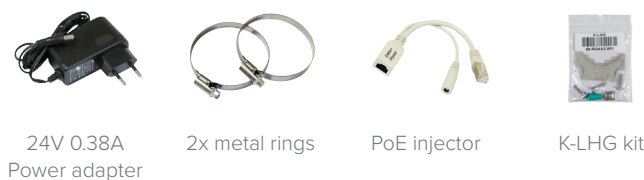
Comparison



Wireless specifications

| Model | LHG 5 | | LHG HP5 | | LHG XL HP5 | |
|----------|----------|----------|----------|----------|------------|----------|
| | Tx (dBm) | Rx (dBm) | Tx (dBm) | Rx (dBm) | Tx (dBm) | Rx (dBm) |
| RATE | | | | | | |
| 6MBit/s | 25 | -96 | 28 | -96 | 28 | -96 |
| 54MBit/s | 20 | -80 | 25 | -80 | 25 | -80 |
| MCS0 | 25 | -96 | 28 | -96 | 28 | -96 |
| MCS7 | 19 | -75 | 24 | -75 | 24 | -75 |

Included



24V 0.38A Power adapter

2x metal rings

PoE injector

K-LHG kit

Specifications

| Product code | RBLHG-5nD (International) RBLHG-5nD-US (USA) | RBLHG-5HPnD (International) RBLHG-5HPnD-US (USA) | RBLHG-5HPnD-XL (International) RBLHG-5HPnD-XL-US (USA) |
|-------------------------|---|---|--|
| CPU nominal frequency | 600 MHz | | |
| Size of RAM | 64 MB | | |
| Storage | 16 MB Flash | | |
| 10/100 Ethernet ports | 1 | | |
| Wireless | Built-in 5 GHz 802.11a/n, dual-chain | | |
| Wireless regulations | Specific frequency range can be limited by country regulations | | |
| Wireless chip model | AR9344 | | |
| Operating frequency | International: 5150 - 5875 MHz USA: 5170 - 5250 MHz; 5725 - 5835 MHz | | |
| Antenna gain | 24.5 +/- 0.5 dBi | 24.5 +/- 0.5 dBi | 27 +/- 0.5 dBi |
| Antenna beam width | 7° | 10,4° | 6,4° |
| Cross polar | 15 dBi | 15 dBi | 21 dBi |
| Port to port isolation | 20 dB | 18 dB | 18 dB |
| Front to back ratio | 25 dB | 25 dB | 35 dB |
| Return loss | 10 dB | 12 dB | 14 dB |
| VSWR | 1.925:1 | 1.6:1 | 1.5:1 |
| PoE in | Yes | | |
| Supported input voltage | 11 V - 30 V (passive PoE) | 10 V - 28 V (passive PoE) | |
| Wind loading | 186N @ 205 km/h | | |
| Operating temperature | -40 to 70° C | | |
| Operating humidity | 5 to 95% noncondensing | | |
| Shock and vibration | ETSI300-019-1.4 | | |
| ETSI specification | EN 302 326 DN2 | | |
| Dimensions | Ø 391 x 222 mm; package 450 x 450 x 145 mm | | Ø 550 x 245 mm; package 585 x 595 x 138 mm |
| Weight | Unit: 560 g; package: 1.98 kg | | Unit: 945 g; package: 2.99 kg |
| Max Power consumption | 6 W | 7 W | 7 W |